



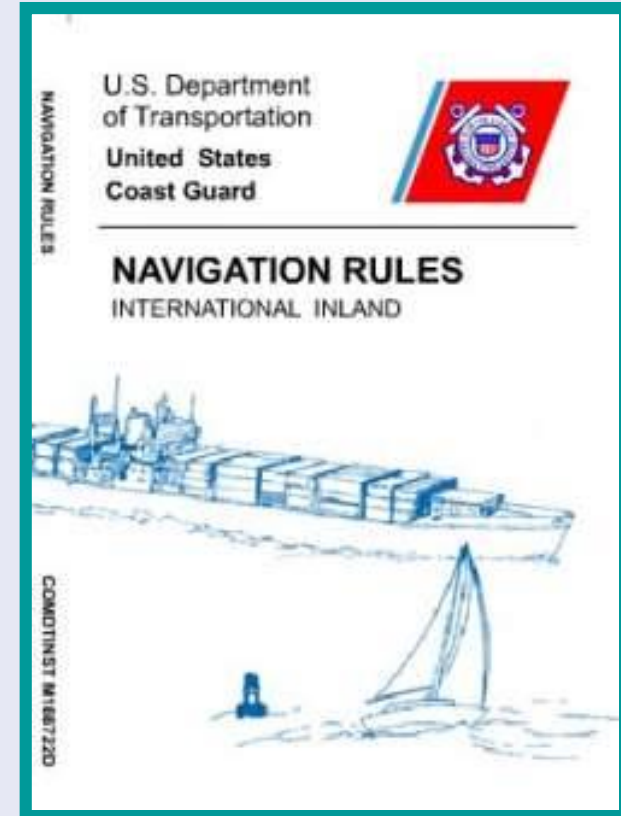
Lights / Sounds / Distress Signals





Navigation Rules

- 1 General responsibility rule
- 2 No exoneration for neglect of the rules
- 3 Departure from rules ok to avoid collision





General Responsibility Rule

(a) Nothing in these Rules shall exonerate any vessel, or the owner, master or crew thereof, from the consequences of any neglect to comply with these Rules or of the neglect of any precaution which may be required by the ordinary practice of seamen, or by the special circumstances of the case.





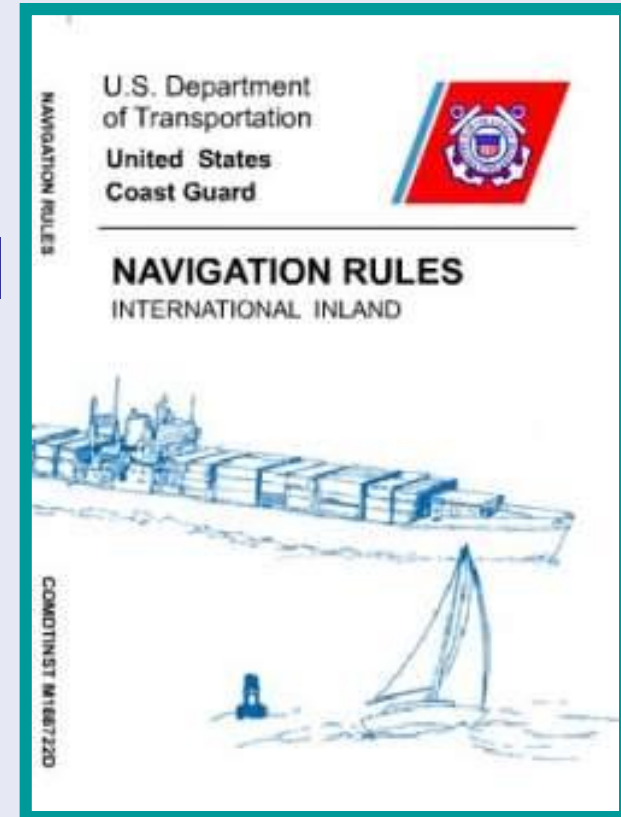
(b) In construing and complying with these Rules due regard shall be had to all dangers of navigation and collision and to any special circumstances, including the limitations of the vessels involved, which may make a departure from these Rules necessary to avoid immediate danger.





Navigation Rules

- 1 When Power driven vessels are in sight of one another and meeting or crossing they **MUST** signal if within $\frac{1}{2}$ mile





Sound Signals

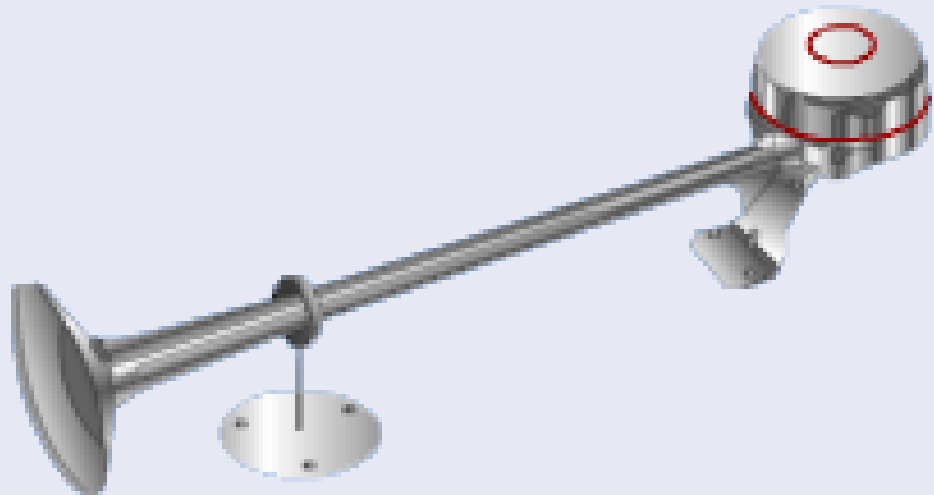
- ① Why have Sound Signals?
- ② When do you use them?
 - Short Blast – about One (1) second long
 - Long Blast – 4 to 6 Seconds





Sound Producing Devices

- **1** Boats <12 meters must carry a whistle or horn
- **2** Vessel Signal whistle = 250-525 HZ for vessels less than 75 Meters





Sound Producing Devices

- 1 Boats 12 meters or more also must carry a bell and a whistle





Sound Signal

(Maneuvering)

- 1 **Maneuvering & Warning Signals**
 - **One Short Blast – Leave you on my Port**
 - **Two Short Blasts – Leave you on my Starboard**
 - **Three Short Blasts – backing up**
 - **One Prolonged Blast – leaving Dock or at a Blind spot**
 - **NOT SURE OR DANGER 5 Short Blasts**





Sound Signal

Restricted Visibility

1

- **Power underway** – one prolonged blast – 2 min.
- **Power not making way**– two prolonged blasts-2 min.
- **Sail boats, OR Restricted maneuverability, OR Vessel Towing** –One long and two short
- **Anchored** – bell rung rapidly 5 seconds OR **a short, a prolonged and a short**
 - Any sound signal that can NOT be confused with another sound signal
- **Vessel engaged in Pilotage duty in restricted Visibility** – 4 Short
- **Vessel Aground** – rapid ringing of bell, then 3 distinct strokes of bell





Night Navigation

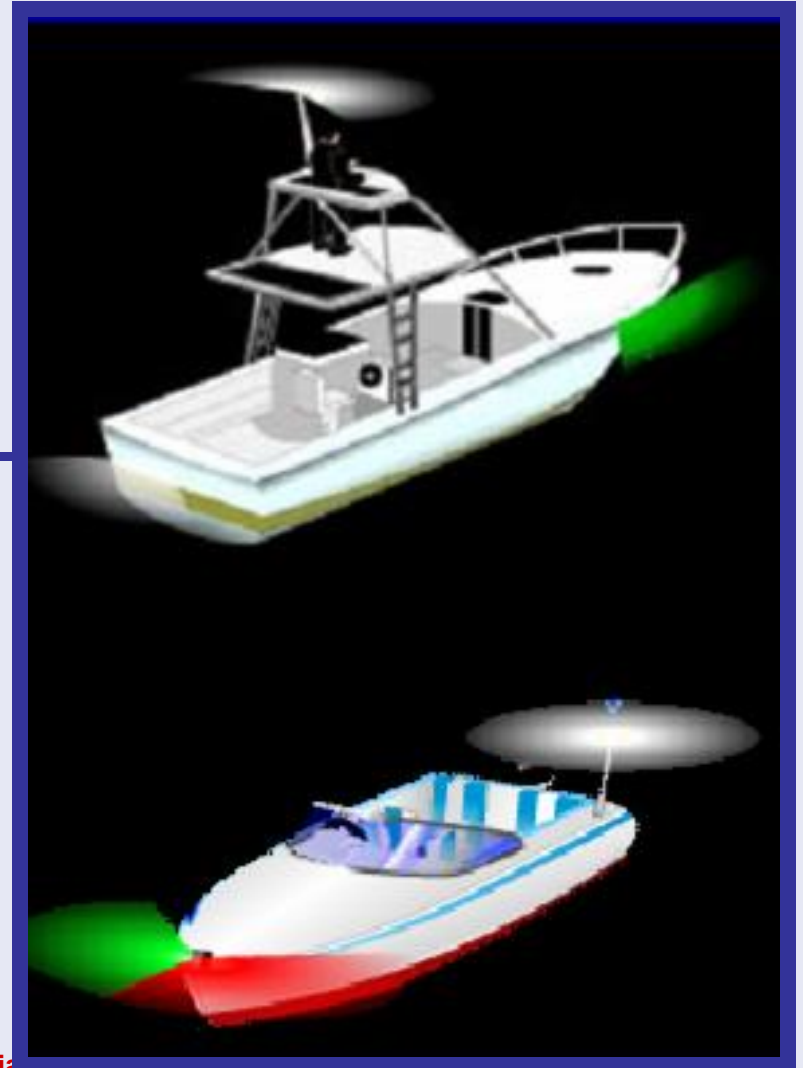
- 1 Make sure navigation lights work
- 2 Use all round light at anchor
- 3 Reduce speed
- 4 Proceed with caution
- 5 Be alert
- 6 Stop if visibility is severely restricted
- 7 High Intensity White light flashing 50 to 70 times/minute – Distress Signal on Inland Waters only





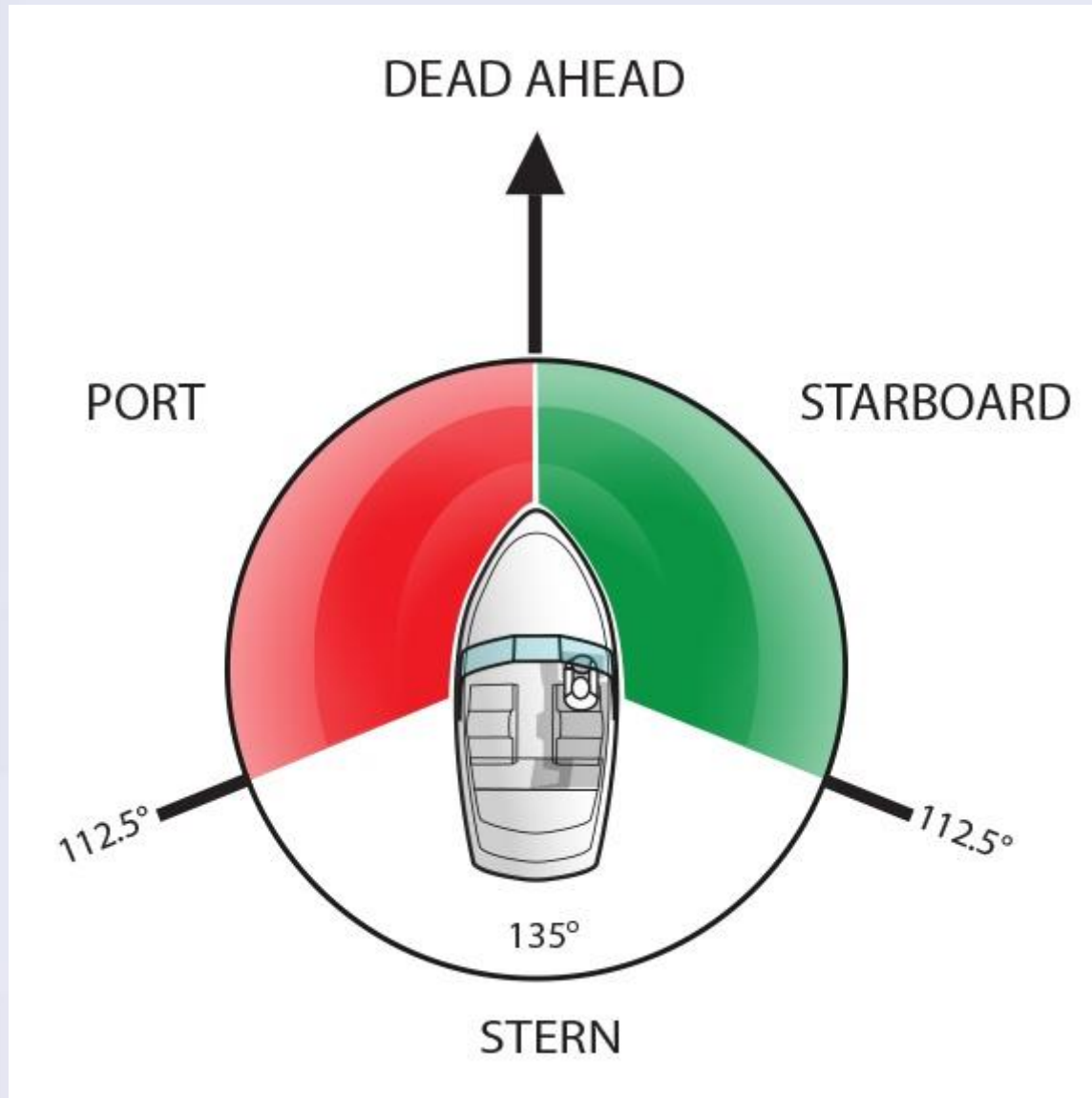
Navigation Lights

- ① Side lights – 112.5°
- ② Stern lights- 135°
- ③ Masthead light - 225°
- ④ All round white light –
 - 360°
 - Or Yellow



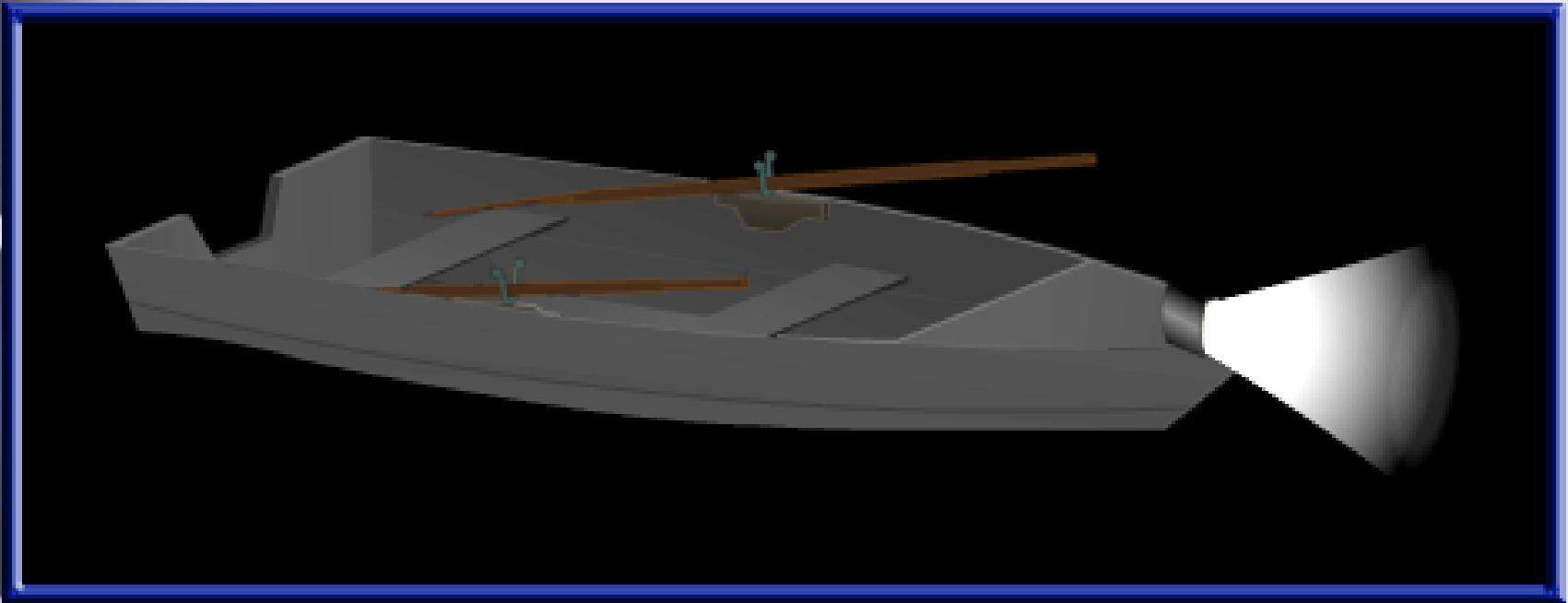


TYPICAL RECREATIONAL BOAT NAVIGATION LIGHTS





Lights



Sailboats < 7 meters

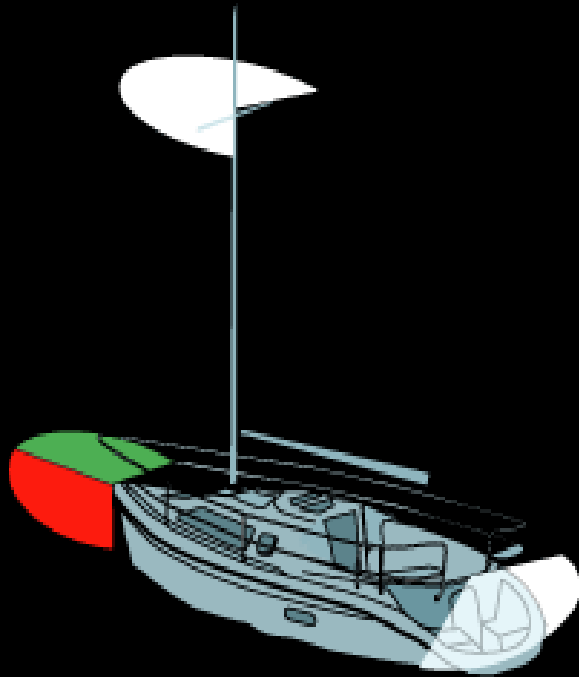
Vessel under oars

Copyright 2005 - Coast Guard Auxiliary Association, Inc.





Lights – Sailboat Underway



Under Power

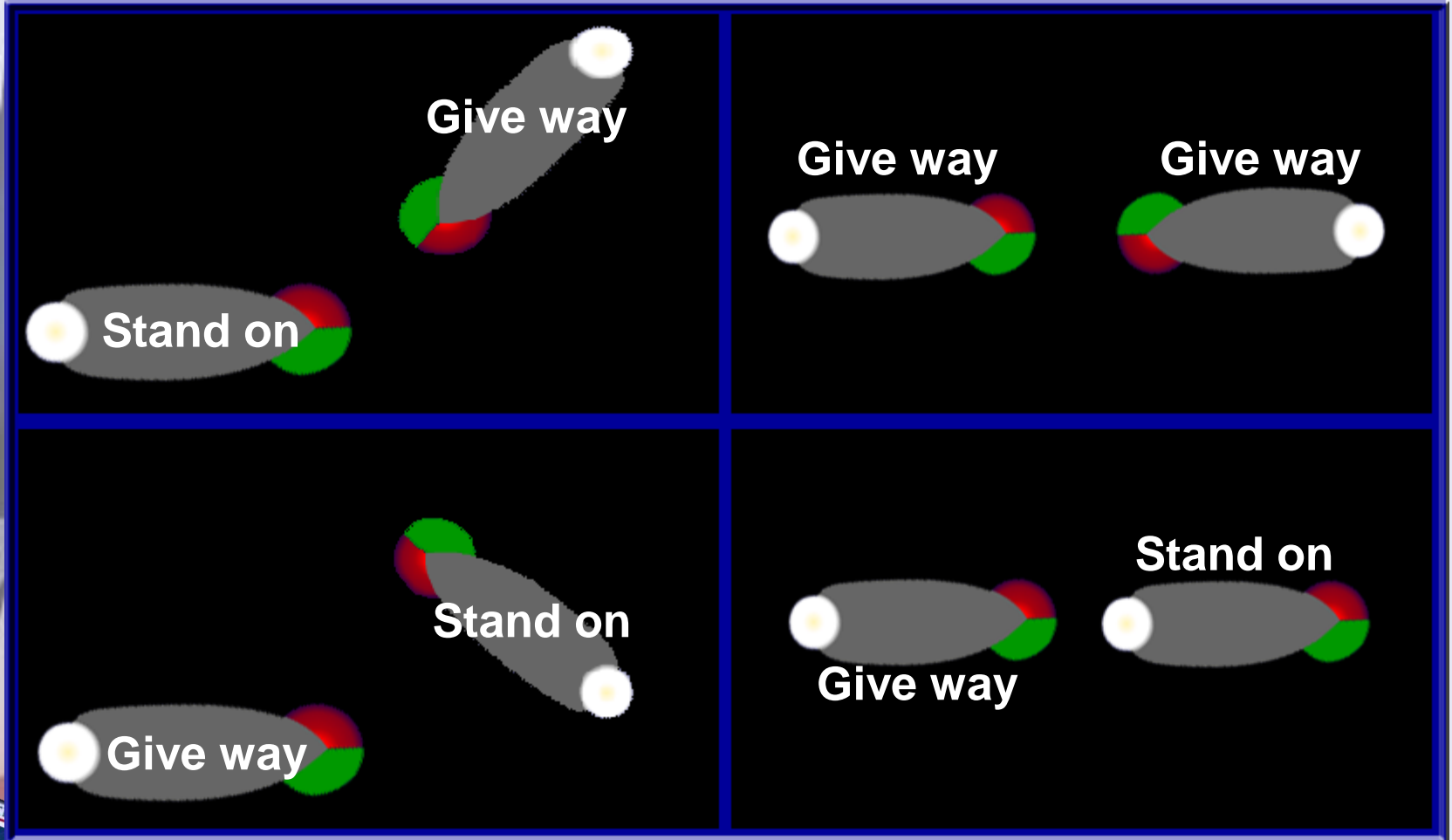


Under Sail





Night Navigation





Sailboat At Night

① Green or red only observed

- May be a sailboat under sail
- Give way

② Sailboat under sail only

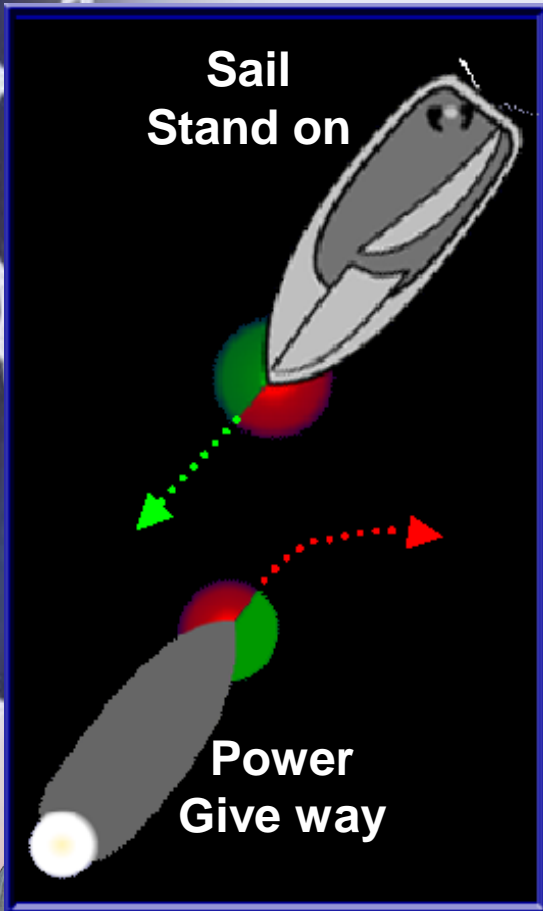
- Always stand-on except when overtaking



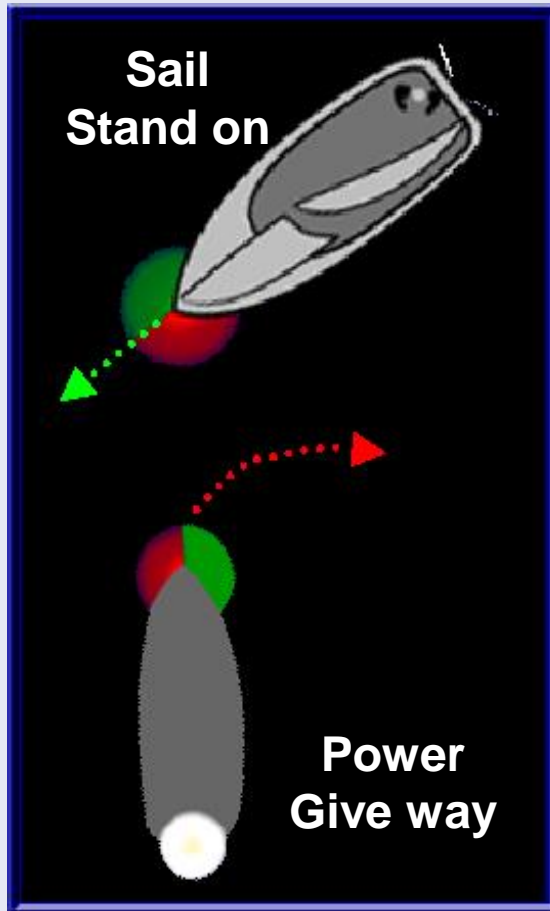


Give Way To Sailboat!

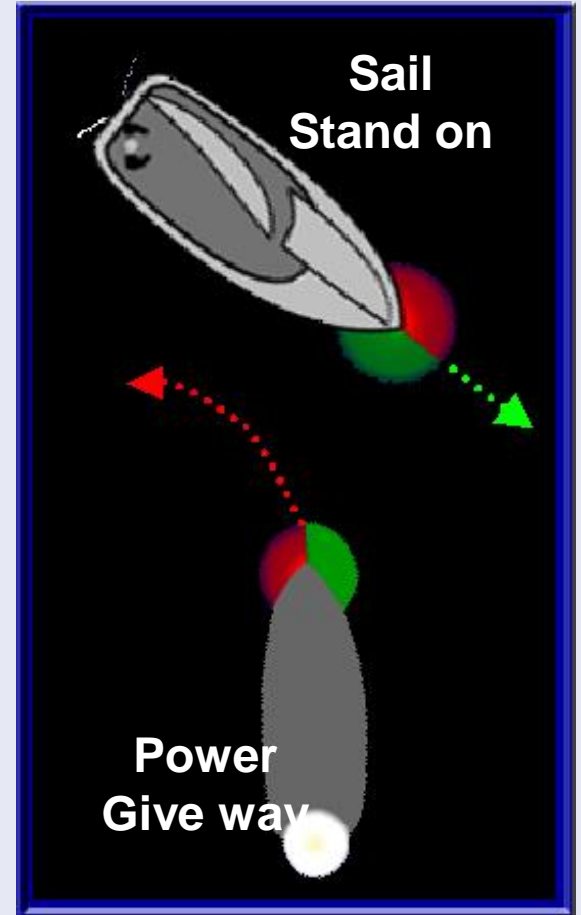
1



2



3





Lights & Sound On Tows

- ① Yellow lights
 - ② Yellow over white stern light
 - ③ Flashing yellow
 - Sound
- ① 1 Prolonged and 2 Short Blasts –
Towing Vessel
 - ② 3 Short Blasts – Towed Vessel





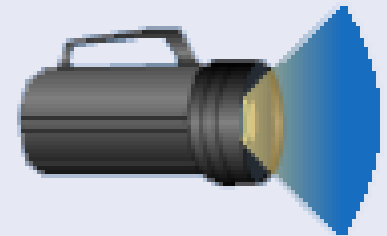
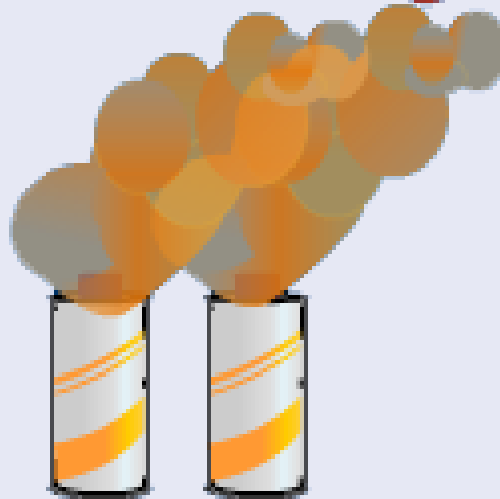
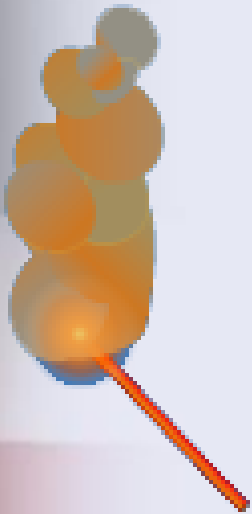
Visual Distress Signals

- 1 How many?
- 2 What kind?
- 3 Who must carry them?





Other Options





Other VDS

Arm signal

Not USCG approved

Use if no other



Orange flag
Day signal only



The following signals, used or exhibited either together or separately, indicate distress and need of assistance.

