

UNIFORMS OF THE DAY

SERVICE
DRESS BLUE



TROPICAL
BLUE



WINTER
DRESS BLUE



OPERATIONAL
DRESS
UNIFORM (ODU)



Reviewed, DIR-T, USCGAUX



WINTER DRESS BLUE

Authorized covers: Combination Cap or Garrison Cap
Office insignia: Collar insignia



Shirt: Winter Dress Blue shirt (CPO shirt)

Undershirt: White v-neck (optional for women)

Belt: Black web belt, silver belt tip & silver buckle

Trousers: CG Trousers, Dress or CG Skirt, Dress*

Footwear: Oxfords, pumps*, or flats* shined or optional synthetic



Name tag, ribbons & devices

Tie: CG Four-in-hand for men & women

Outwear: Windbreaker, trench coat
Foul Weather Parka (limited)

Socks/Hosiery: Socks are worn with oxfords, hosiery with pumps or flats.

* optional for women

Reviewed, DIR-T, USCGAUX



GARRISON CAP



Reviewed, DIR-T, USCGAUX



COMBINATION CAP



			
<p>SERVICE DRESS BLUE</p>	<p>TROPICAL BLUE</p>	<p>WINTER DRESS BLUE</p>	<p>OPERATIONAL DRESS UNIFORM (ODU)</p>
			

Reviewed, DIR-T, USCGAUX



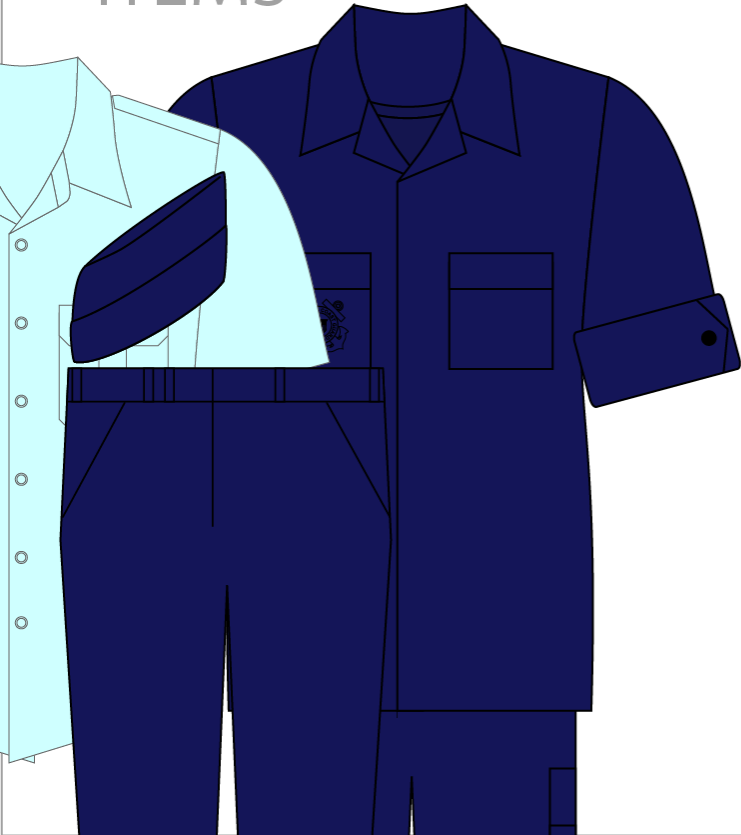
ODU BALL CAP



Reviewed, DIR-T, USCGAUX



COAST GUARD ITEMS



AUX. UNIQUE ITEMS



MARKET ITEMS



Reviewed, DIR-T, USCGAUX

