

# Security Zones Updated in Tampa Bay Area

*Story by PA1 Tasha Tully, PADET St. Petersburg, Fla.*

TAMPA, Fla. – The U.S. Coast Guard recently published updates to the security zones in the Tampa Bay area. The changes made to the zones were based on information gained by using the newly-developed Maritime Security Risk Analysis Model (MSRAM) tool utilized by the Tampa Bay Area Maritime Security Committee (AMSC).

This comprehensive approach considered a multitude of factors impacting the maritime environment. The end result yielded recommendations to integrate this information into updated security zones.

A security zone is an area to which access is limited to authorized personnel and to authorized and properly escorted visitors. As per federal regulations within the 33 Code of Federal Regulations part 165, entry into the security zones is prohibited without the permission of the Captain of the Port St. Petersburg.

The violation of a security zone is a federal offense and may result in civil penalties; fines of up to \$32,500 per violation, where each additional day of a violation is a separate violation, or criminal penalties including imprisonment for up to 10 years and a fine of up to \$10,000, seizure and forfeiture of the vessel, and other administrative sanctions authorized by law.

“Changing the Tampa Bay security zones helps keep a balance between homeland security and public access,” said Lt. Jason Franz, a member of Coast Guard Sector St. Petersburg’s Planning Department. “These changes also allow law-enforcement agencies to allocate resources in a way that will best serve the public.”

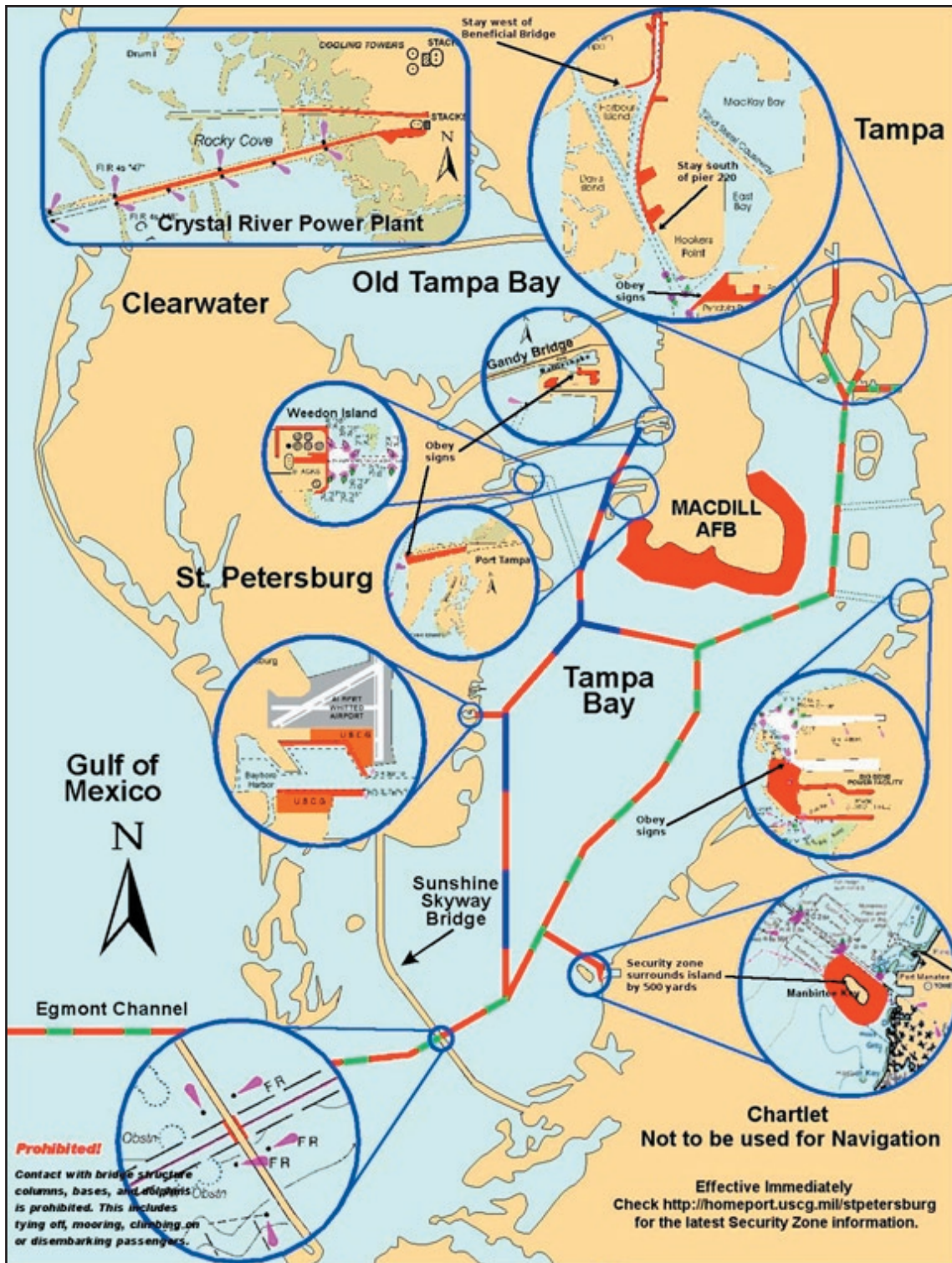
A list of all the security zones include waters in and around Tampa Bay, Port of Tampa, Port of St. Petersburg, Rattlesnake, Old Port Tampa, Big Bend, Weedon Island, Crystal River, Manbirtee Key in Port Manatee and MacDill Air Force Base.

The final rules for the security zones are available in the Federal Register and are codified as follows:

- Tampa Bay, Port of Tampa, Port of St. Petersburg, Rattlesnake, Old Port Tampa, Big Bend, Weedon Island, Crystal River [USCG-2007-0062]  
<http://a257.g.akamaitech.net/7/257/2422/01jan20081800/edocket.access.gpo.gov/2008/08-20.htm>
- Manbirtee Key in Port Manatee- [USCG-2007-0061, formerly COTP St. Petersburg 07-226]  
<http://a257.g.akamaitech.net/7/257/2422/01jan20081800/edocket.access.gpo.gov/2008/E8-1013.htm>
- MacDill Air Force Base- [USCG-2008-0013]  
<http://a257.g.akamaitech.net/7/257/2422/01jan20081800/edocket.access.gpo.gov/2008/E8-1765.htm>

For details, including downloadable pamphlets illustrating the revised zones, please refer to the Sector St. Petersburg website at <http://homeport.uscg.mil/stpetersburg> under the Port Directory menu tab.





Restricted Areas and Security Zones are **Marked in RED**



For additional information contact the U.S. Coast Guard Sector St. Petersburg at:

(727) 824-7531  
 or  
<http://homeport.uscg.mil/stpetersburg>  
 or  
 see CFR 33 Part 165

**If you witness or Suspect Terrorist Activities**

**Call:**  
**Americas Waterways Watch**  
**877-24WATCH**  
 877-249-2824  
 or  
**911**  
 or contact the **U.S. Coast Guard**  
 on:  
**VHF Ch 16**

**Moving Safety Zones & Moving Security Zones**  
 Within the Tampa Bay Ship Channel

Cruise Ships

Cruise Ships  
 NH3 (Anhydrous Ammonia)  
 LPG (Liquefied Petroleum Gas)  
 Tank Ships

LPG (Liquefied Petroleum Gas) Barges