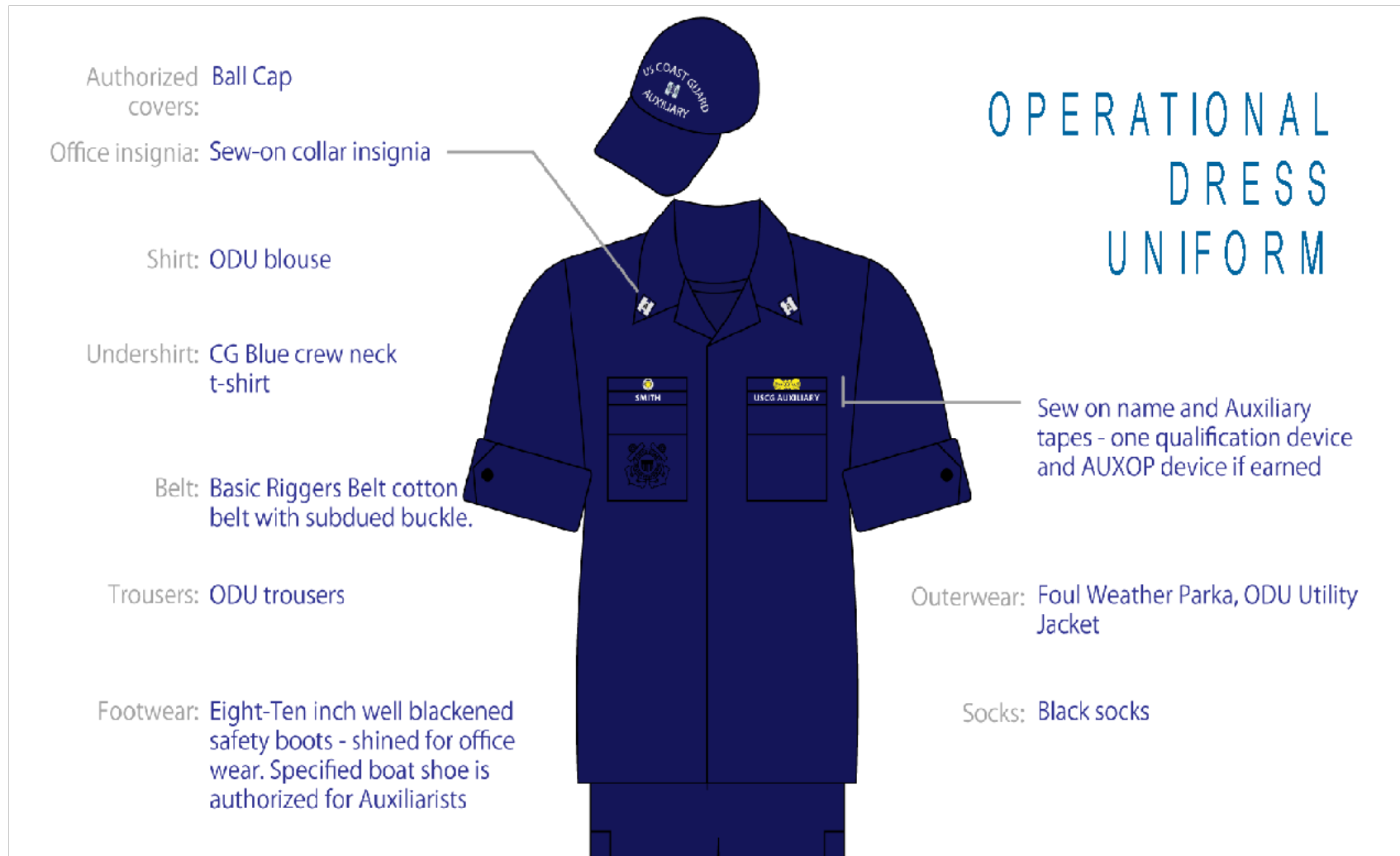


Operational Dress Uniform (ODU)



Operational Dress Uniform (ODU)

- Worn for Surface Operations unless otherwise specified or authorized (Districts vary on specifics).
- May be worn while commuting.
- Sleeves shall be worn up or down unless specifically prescribed.



Operational Dress Uniform (ODU)

- Boots, high top, lace up are worn.
- Deck shoe is an authorized option for operations and or vessel exams, when wearing either ODU, Optional ODU, Optional VE, or Hot Weather uniform.
- ODU trousers are worn bloused with boots. They are worn unbloused with boat shoes, only when conducting vessel safety checks, underway on an Auxiliary operational facility, commuting to or from a point of Auxiliary patrol or safety check activity, or specifically authorized by a Coast Guard order issuing authority.



Operational Dress Uniform (ODU)

- Sew-on cloth nametapes, USCG AUXILIARY, and devices must be the full width directly above pocket.
- Sew-on or Velcro cloth member and insignia of office collar devices (depending on District policy), are worn with black “A” for insignia of office devices. **Collar and Cap devices must match.**
- Direct embroidery, plastic name tags, and metal devices other than device worn on the ballcap are prohibited.

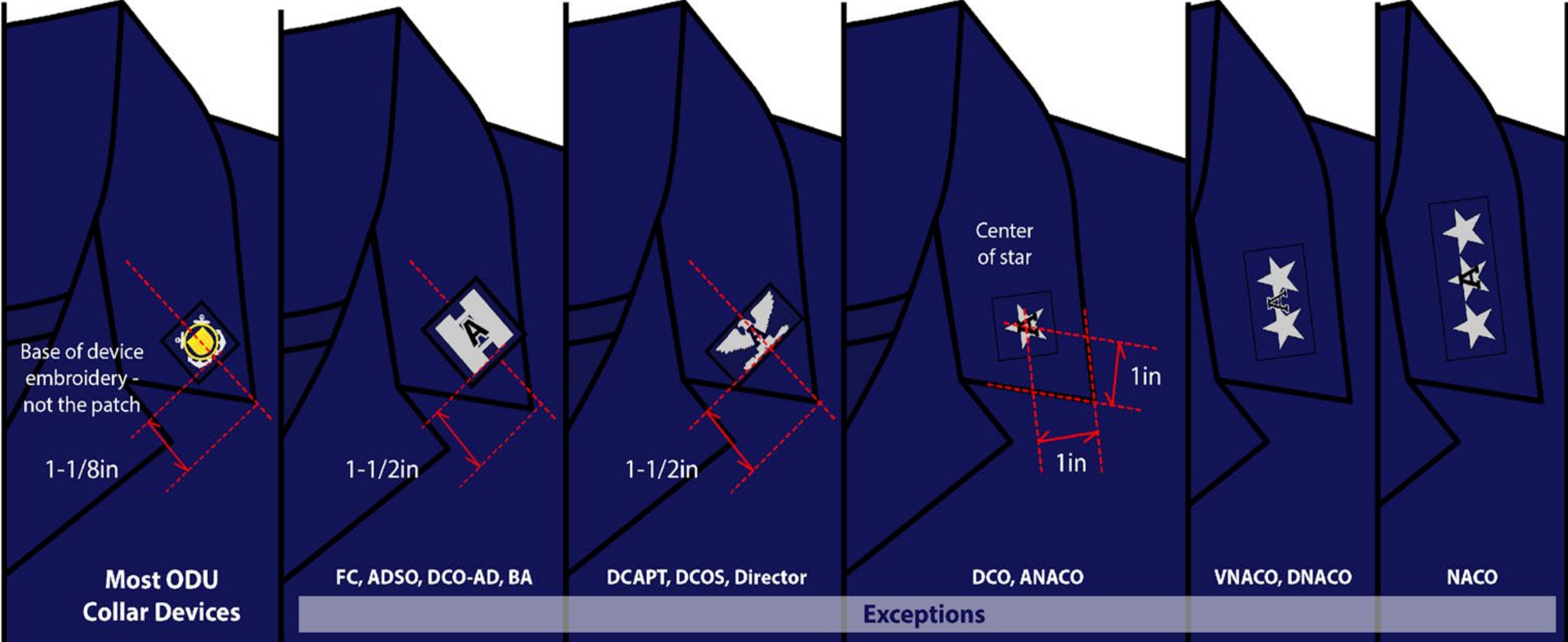


Operational Dress Uniform (ODU)

- The dark blue crew neck tee-shirt with or without “USCG AUXILIARY” embroidered or screen printed on the front left chest is worn.
- **(Plain blue ODU T-shirt is now authorized per UB 47).**
- Belt is black web belt with subdued open-faced buckle or basic riggers belt.
- USCG Auxiliary ball cap, or Tilley hat obtained from an appropriate source may be worn with the ODU. Cap devices must match the collar devices.
- Tucked version of the ODU is **No** longer authorized
- **(No longer serviceable means no holes, tears, faded).**



ODU Member and Office Devices



ALTERNATIVE WORK UNIFORM (AWU)

Optional uniform for Operational Dress Uniform (ODU)

Worn With:

- Auxiliary Ball Cap with Member Device
- Long or short sleeve polo shirt WITHOUT COLLAR DEVICES
- Black Rigger's belt w/ black buckle
- Long or short trousers (Depending on District)
- White socks
- Boat shoes or ODU Boots

Click below for more information

[AWU Basics](#)

[AWU SOP](#)



What is the Alternative Working Uniform Pilot Program?

The Alternative Working Uniform Pilot Program (AWUPP) is being conducted in the 1st Southern and 8th Coastal Regions of the USCG AUX from 1 OCT 2021, through 31 DEC 2022. The Program's purpose is to introduce the new Alternative Working Uniform that any members may opt to wear instead of ODUs or the Coast Guard CGU being rolled out over the next two years to active duty.

The tucked ODU will no longer be an authorized uniform after 12/31/21. The CGU will be made available to Auxiliarists in Fiscal Year 2024 when the Untucked ODU will begin to be phased out. The program will allow members of the 1st Southern and 8th Coastal regions to evaluate the AWU's performance. The uniform is authorized anywhere the ODU is currently authorized for wear.

AWU BASICS



Long and short sleeved polos are authorized. Tucked for men and either tucked or untucked for women.

Pant is the 5.11 Ripstop tactical pant. Dark Navy in color.

How to find the components: Click on this link <https://www.cgauxa.org/>



Auxiliary Alternate Working Uniform Pilot

October 2021-December

2022



WHY THE ALTERNATE UNIFORM?

The last uniform change experienced by the USCGAUX was in 2012 when the tucked version of the ODU was replaced with the untucked version. While the untucked ODU has served the Coast Guard well, it is now time for the Coast Guard's work uniform to be updated to include a uniform that is conducive to warm or cold environments, have identification patches placed on the sleeves of the Uniform (the National Ensign on one and an Organization Patch on the other) and, for the Auxiliary, new breast-tapes on the uniform blouse that will help to distinguish between the Auxiliary and the Active Duty.

In addition, the Coast Guard has made a business decision that the CGU will not be available in sizes that are larger than the sizes worn by the Active Duty; this means that the CGU may not be available to some of our members. The tailoring of two uniforms to make one to work around sizing issues will not be allowed when the CGU is rolled out. In conjunction with the sizing availability, grooming standards for Auxiliarists are being further defined for members who choose to wear the CGU. The AWU allows those members who opt not to follow some the grooming standards to remain active and valuable members of the USCG AUX.

Pilot districts may order immediately.

All others should wait until 1/1/2022.

HOT WEATHER UNIFORM

May be worn by Auxiliarists, in districts where approved by District Commanders.



May be worn if approved by District Commander

Currently allowed in all Districts except 1 and 14

Details

Components include polo from Aux provider, 5.11 pant, hat, belt and footwear. Outerwear is authorized the same as for ODUs.

All components (except footwear) should be accessed from links provided on Aux Association Webpage.

Long and short sleeved polos are authorized. Tucked for men and either tucked or untucked for women.

Authorized footwear includes boots (unbloused), boat shoes in colors approved by Aux Man and Postal Walking shoes (black only, no sneakers, tennis shoes or other alternatives.)

Authorized headgear: USCG Aux ball cap, boonie or Tilley.

Belt: black web with non-decorative buckle, available through CG Exchange.

The AWU is available for purchase now at the Auxiliary Association Member Store through links to the uniform's providers, to members of the 1st Southern and 8th Coastal Regions and will be available to all members of the AUXILIARY after Jan 1, 2022. If you are wearing the outdated tucked ODU, you may want to consider transitioning to the AWU. More details about the program, the uniform and grooming standards and how the uniforms standards will be applied have been given to your District Captains and Division Commanders; they are also available on the District Websites of the Pilot Districts (for now).

AUX Food Service Prep Uniform

Authorized Ball Cap covers:



Shirt: Navy blue polo shirt with Auxiliary logo

Undershirt: Navy ODU T-shirt (optional)

Belt: Brown belt

Trousers: Khaki

Footwear: Athletic shoes or chef's clogs



No name or devices

Socks/Hosiery: White socks

Prep Uniform



AUX Food Service Polo Uniform

- Auxiliary ODU Ball Cap with Member Device only
- Navy blue polo shirt with Auxiliary logo only
- ODU T-shirt (optional)
- Khaki trousers
- Brown leather belt
- White socks
- Athletic shoes or Chef's clogs

AUX Food Service Work Uniform

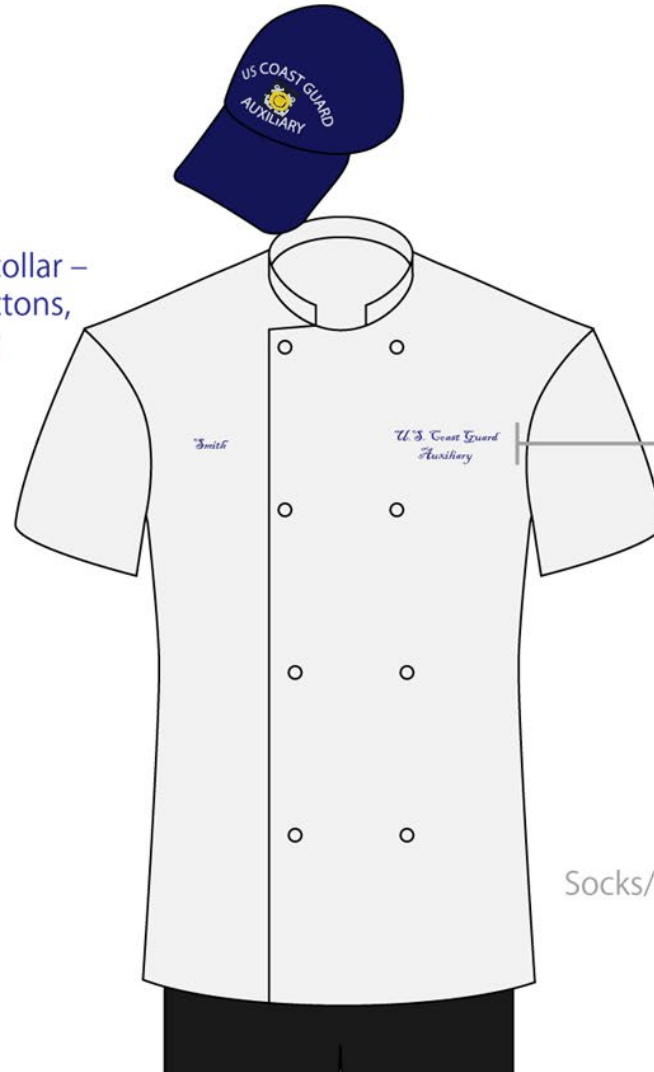
Authorized Ball Cap or white covers: chef's skull cap

Shirt: White Chef's coat (Short sleeved, Stand up collar – no trim, clear or white buttons, no collar devices, logos or decorations)

Undershirt: White

Trousers: Black or ODU

Footwear: Safety boots or shoes, black athletic shoes or chef's clogs



Work Uniform
ODUs may be worn

Last name on right
U.S. Coast Guard Auxiliary on left in blue or black, italic, upper and lower case embroidery

Socks/Hosiery: White or black socks



AUX Food Service Work Uniform

- Auxiliary ODU Ball Cap with Member Device only, or chef's skull cap
- White Chef's coat, short sleeve with stand-up collar, no trim, clear or white buttons, no insignia, devices, logos, or decorations
- Black or blue italic upper and lower cased embroidered last name on right breast sided, U.S. Coast Guard Auxiliary on left breast side
- White T-shirt
- Black trousers or ODU pants
- Belt
- White or black socks
- Black athletic shoes or Chef's clogs, or Safety boots if wearing ODU pants



AUX Food Service VIP Uniform

Authorized Ball Cap covers: (may be optional)

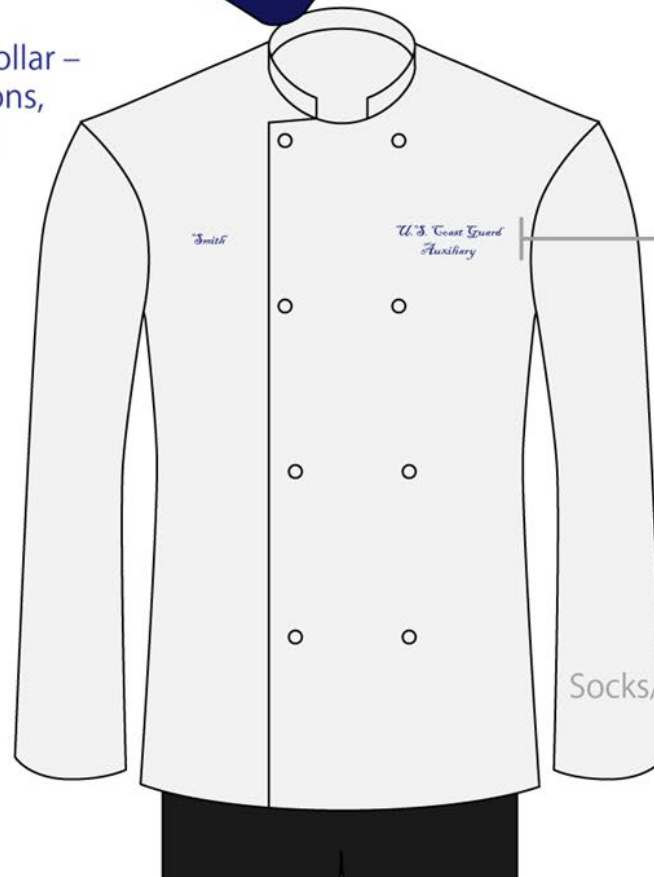


Shirt: White Chef's coat (Long sleeved, Stand up collar – no trim, French knot buttons, no collar devices, logos or decorations)

Undershirt: White

Trousers: Black

Footwear: Black dress shoes or chef's clogs



Last name on right
U.S. Coast Guard Auxiliary on left in blue, italic, upper and lower case embroidery

Socks/Hosiery: Black socks

White Chef's Coat (VIP Events)



AUX Food Service VIP Uniform

- Auxiliary ODU Ball Cap with Member Device only, or option not to wear
- White Chef's coat, long sleeve with stand up collar, no trim, French knot buttons, no insignia, devices, logos, or decorations
- Black or blue italic upper and lower cased embroidered last name on right breast sided, U.S. Coast Guard Auxiliary on left breast side
- White T-shirt
- Black trousers
- Belt
- Black socks
- Black Dress shoes or Chef's clogs



ODU Ball Cap



ODU BALL CAP

			
SERVICE DRESS BLUE	TROPICAL BLUE	WINTER DRESS BLUE	OPERATIONAL DRESS UNIFORM (ODU)
			



ODU Ball Cap

- Note: Auxiliary ball caps must be obtained from:
 - USCG Exchange (CGEX)
 - AUXCEN
 - UDC
- Only ball caps made of ODU material ball cap are authorized for use
- Embroidered cap ornamentation (acorns and leaves) are no longer authorized
- Small metal office of insignia worn or member device,
Insignia on cap must be the same on ODU collar



Mission Specific Vessel Examiner Polo Shirts

Vessel Examiner Polo

New Vessel Examiner
White or Blue Polo Shirt.
Light blue polo shirts are
no longer available for
purchase but may be
worn until no longer
serviceable.

The light blue VE shirt is
no longer available for
purchase but may be
worn until not serviceable.



Vessel Examiner (VE) Polo Shirt

- The VE Polo shirt is authorized for wear as an optional uniform shirt worn as part of the ODU, and Hot Weather uniform.
- The shirt is not authorized for wear on patrol and no insignia, name tags or breast devices shall be worn with the shirt.
- Headgear (when wearing the Polo shirt) shall not display office insignia. Only the member device shall be displayed on the hat.
- The AUXCEN carries the only authorized shirt.



Auxiliary Operations Polo Shirt

- The Auxiliary Operations Polo Shirt may be worn as an alternative to the Operational Dress Uniform (ODU) top, and the Hot Weather Uniform shirt for patrol activities.
- No logos, patches, insignia, name tapes, nor name tags of any type may be worn on this shirt.
- The Auxiliary Operations Polo shirt will be dark blue in color, and have two or three buttons with no pockets. It may be 100 percent cotton or be made of a cotton-polyester blend to facilitate moisture wicking.
- Lettering will be embroidered with USCG AUXILIARY on the left front side, and the LAST NAME of the Auxiliarist on the right front side.
- The ODU ball cap device will be the "member" insignia only.
- The AUXCEN carries the only authorized shirt.



Hot Weather Uniform

Authorized ODU Ball Cap, Sun covers: Hat/Tilley

Shirt: CG Blue crew neck t-shirt with USCG AUXILIARY screen printed/embroidered, Operational polo shirt, VE Polo when conducting VEs

Footwear: Well-blackened 8-inch or 10-inch safety boots; boat shoes (authorized style & color only); all white or all black, low top, athletic shoes with nonskid/ nonmarking soles

Socks: White socks

Outerwear: None



HOT WEATHER UNIFORM

Trousers: ODU trousers hemmed at the knee or 1 inch above the knee

Belt: Black ODU belt with open buckle; optional riggers belt

OR

Trousers: Modified Coast Guard blue utility hemmed at the knee or 1 inch above the knee

Belt: Black web belt with silver buckle & tip



Hot Weather Uniform

- This uniform is authorized as an optional uniform for Auxiliarists only at the discretion of their DIRAUX.
- No USCG equivalent.
- The Director (DIRAUX) shall prescribe the proper season for its wear.
- It is not appropriate for routine office wear.
- Shorts are modified Coast Guard modified blue utility or ODU trousers, cut and hemmed at knee or 1 inch above knee.
- Any shirt worn, must be tucked into the shorts with this uniform.



Hot Weather Uniform

- The Coast Guard dark blue crew neck T-shirt (stenciled or embroidered with the words “USCG AUXILIARY” across the front left chest in white ¾-inch tall block-style letters) is the prescribed shirt with this uniform.
- **Plain blue ODU T-shirt is now authorized per UB 47).**
- The Auxiliary Operations Polo Shirt may be worn with this uniform as an alternative for patrol activities.
- The optional VE shirt may be worn when conducting vessel safety checks (VSCs).



Hot Weather Uniform

- Well-blackened 8-inch or 10-inch safety boots, boat shoes (dark blue or brown leather) or all white or all black, low top, athletic shoes with nonskid/non-marking soles are authorized for Auxiliarists wearing the hot weather uniform.
- Socks shall be all white, athletic type, crew length.
- Belt is black web belt with silver buckle and tip or the optional basic riggers belt.



Hot Weather Uniform

- The Auxiliary ball cap, or the Tilley hat, are the prescribed hats to be worn with this uniform.
- No insignias are worn on the ODU T-shirt, the Operations Polo Shirt, or the VE polo shirt.



FLIGHT SUIT

- **USCG AUXILIARY STANDARD – Standard 04-02-A Flight Suit.doc 16-Apr-04 United States Coast Guard Auxiliary**

- **Standard for Flight Suits for Auxiliary Aviation**

- Auxiliary Office Sew-on Insignia (optional)

Participation Patch, if awarded

- American Flag
- 2.25” x 3.5” (apx)
- Coast Guard
- Auxiliary Flight Suit Patch

Coast Guard or Auxiliary District or C.G. Air Station

Pilot/Aircrew - Wings

- Observer – Auxiliary Emblem
- Qualification (Optional) below name:
• AIRCRAFT COMMANDER, FIRST PILOT, COPILOT,
AIRCREW, OBSERVER



FLIGHT SUIT PATCHES



- Auxiliary Office Sew-on Insignia (optional)
- Participation Patch, if awarded
- American Flag
- 2.25" x 3.5" (apx)
- Coast Guard
- Auxiliary Flight Suit Patch
- Coast Guard or Auxiliary District or C.G. Air Station
- 500 HOURS
- Pilot/Aircrew - Wings
- Observer – Auxiliary Emblem
- Qualification (Optional) below name:
- AIRCRAFT COMMANDER, FIRST PILOT, COPILOT, AIRCREW, OBSERVER



Flight Suits

- Authorized for wear only during flight or any aviation mission performed under orders.
- Shall be similar in pattern, color, and design to those worn by active duty Coast Guard aviators.
- Zipped to within 3 inches of top at all times.
- Head gear either garrison cap, baseball cap, or protective gear as required.
- Confirm local standards through your DSO-AV.



Footwear

- Dress shoes = Service Dress Uniforms (heels no higher than 1”).
- Boat Shoes = ODU, Hot Weather Uniform.
 - Dark Blue or brown leather, low cut moccasin type.
- ODU Boots = ODU & Hot Weather Uniform.
 - Shall be shined when in a classroom or office.
- Tennis Shoes = Hot Weather Uniform.
 - All white or all black.
- Black socks made of knitted or ribbed on decorated material
 - Not grey, dark blue, etc.
 - No stitching or seam across the toe.
- White socks shall be all white, athletic type, crew length.



Boat Shoes

- Per the Chief Director Final Action 2015-004/15.
- That the Auxiliary Manual, Chapter 10, sub-divisions H.3.e. and H.4.e. be amended to provide authorization for the wear of boat shoes "only" when conducting vessel safety checks, when underway on an Auxiliary operational facility, when commuting to or from a point of Auxiliary patrol or safety check activity, or when specifically authorized by a Coast Guard order issuing authority.

