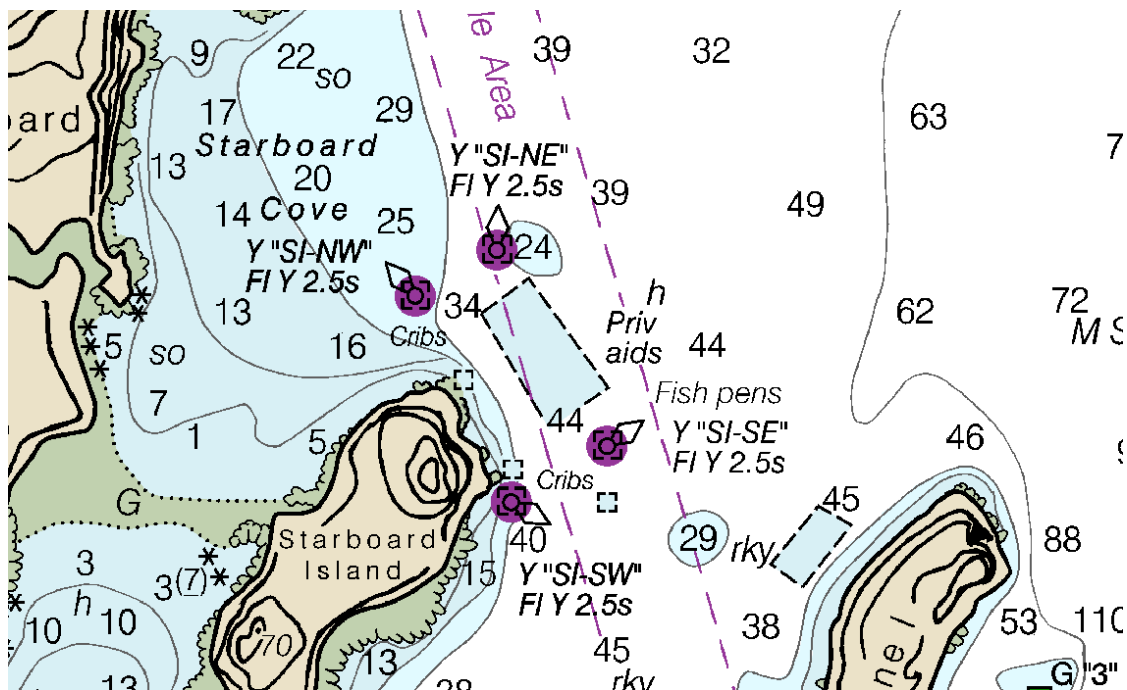


Yellow Buoys John Collins F43-MS

Yellow markers are special marks that are not primarily intended to assist safe navigation. Rather, they warn of areas that should be avoided such as aquaculture beds, pipelines, environmental monitors, spoils areas, military operations areas, traffic separation zones, and offshore LNG ports. If they are lit, their lights are yellow.

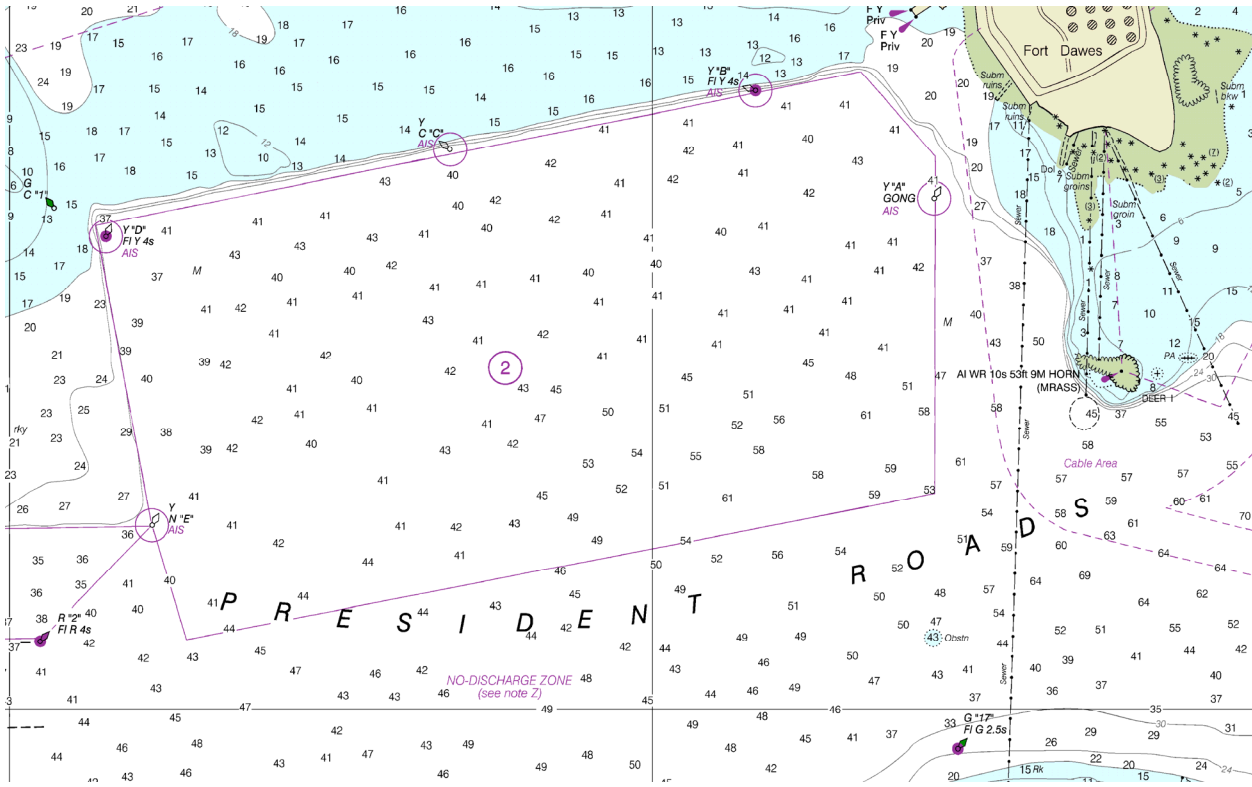
The marked fish pen area below is one of several in Machias Bay as shown on Chart 13326. Note that there are other, smaller, unmarked fish pens to the south and southeast of the marked one. Fish pens will be discussed in another article.



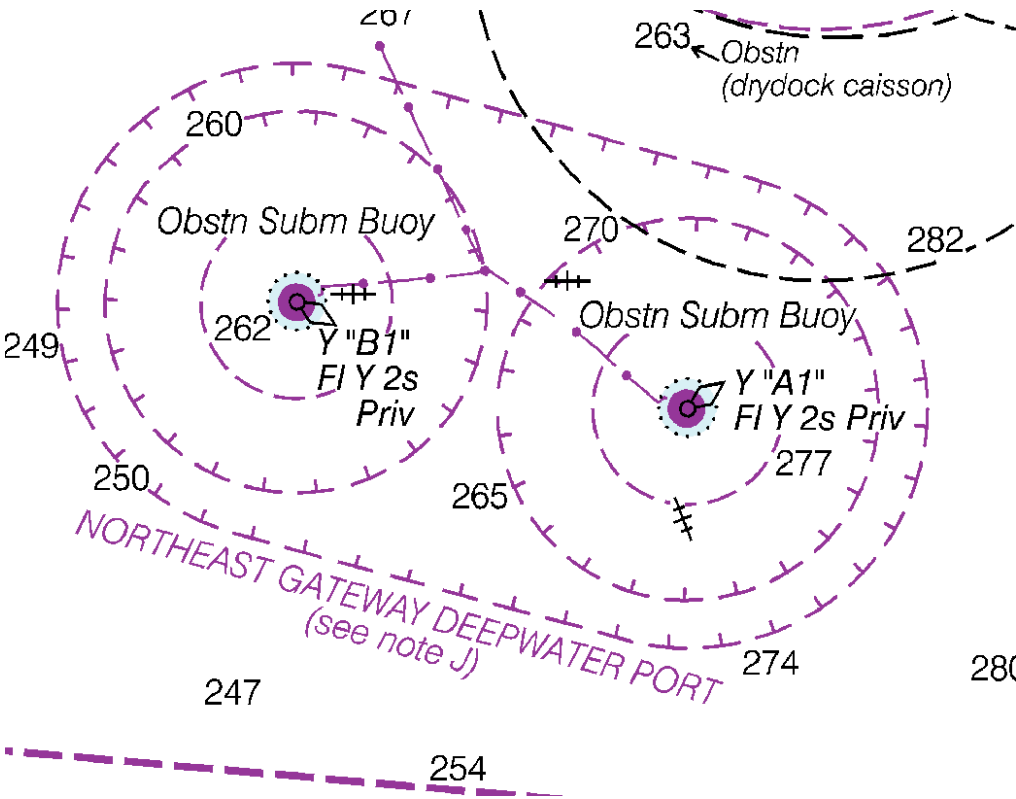
Fishing may or may not be permitted in the fish pen areas and the charts do not show this status. You should check with local authorities if you wish to fish in these areas.

Some of the other charts with Aquaculture Zones noted, which may or may not be noted by yellow buoys include: 13398, 13396, 13394, 13392, 13326, 13316, 13313, 13312, 13309, 13006, 13236, 13232, 13229, 13224, 13217, 13213, 13205, 12369, 12358, and 12354. There are others.

An example of an anchorage, President Roads off Deer Island, where ship sometimes wait before entering Boston, is marked by yellow buoys as seen below from Chart 13272. The yellow buoys here advise you where the anchorage is. Note the magenta circles around these buoys and the "AIS" note. This means they have an Automatic Identification System transmitter and will show on an Electronic Chart Display and Information System (ECDIS) display.






The offshore LNG ports off Boston are marked by yellow buoys. You should avoid the area. The Northeast Gateway Deepwater Port, from Chart 13267, is shown below. This area is normally patrolled by the support vessels, GATEWAY ENDEAVOR or SCARLETT ISOBELLA.



The Neptune Deepwater Port is just to the north of the Northeast Gateway port.

Per 33 CFR 150.940 and 33 CFR 165.110, you cannot anchor within a 1,000 meter radius of one of the buoys, the middle circle. You cannot enter, without penalty, the 500 meter radius inner circle unless you are a tanker or a support vessel. Otherwise, you must get permission from the Captain of The Port, COTP, to enter the Safety Zone.

Distributed cables and pipelines are generally not marked by yellow buoys but they are noted on charts with the following symbols

Cables	Pipelines	Cable and Pipeline Areas
		

You can see examples of these on Charts 13267, 13270, 13274 and 13275 which show the high pressure, Algonquin natural gas pipeline that runs from Weymouth to Salem and the Hibernia transatlantic cable that runs East from the Nahant traffic circle in Lynn. The new Salem lateral, off the Algonquin pipeline in Beverly Harbor, is shown by the pipeline area notation.

If a pipeline is no longer active, there are usually words saying so. Further descriptions of the chart markings can be found in Chart 1 which you can download from:

<https://nauticalcharts.noaa.gov/publications/us-chart-1.html>

Although these pipes and cables are generally buried, you should avoid anchoring in these areas.

If you transit an area that you are not familiar with you should check the local area charts for the yellow buoys and distributed hazards.

The various books of the U.S. Coast Pilot, which you can find on-line at:

<https://www.nauticalcharts.noaa.gov/publications/coast-pilot/index.html>

contain helpful narratives of various features that you might encounter. They make interesting reading.