

Aground on Tom Moore Rock

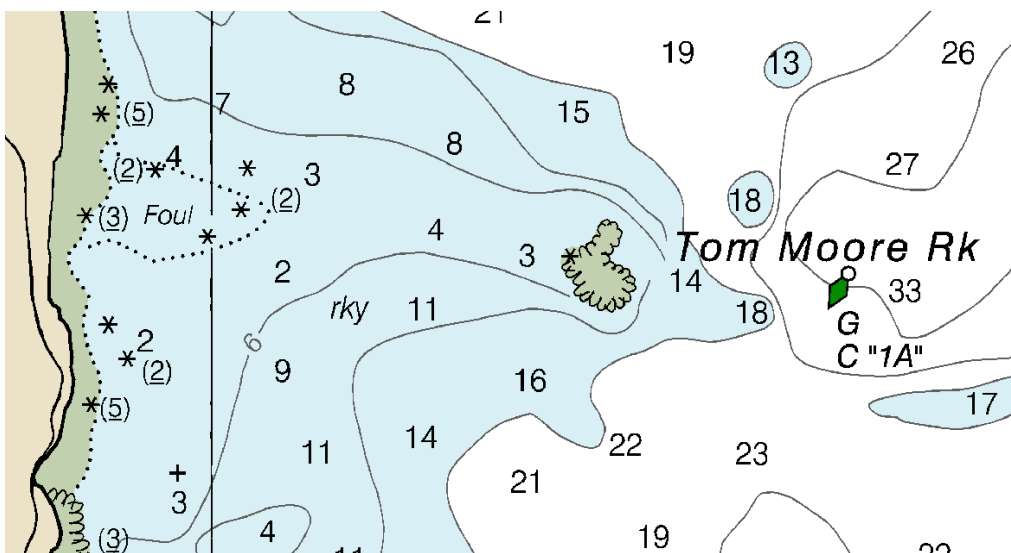
John Collins

USCG Auxiliary SO-PE

In late August 2017 an Endeavour 42, which has a draft of 5.0 feet, ran aground on Tom Moore Rock off Marblehead Neck and sank with sails drawing. In the picture below you can see, over the bow, a green can that is a warning about the rock.



At the time there was discussion about why the day beacon, that had previously been on the rock, was not replaced after being damaged in a storm. It was replaced by a green can. If you look at the chart, 13276, below you can see shallow water on the land side of the rock. Spindle day beacons, like one that use to be on Tom Moore Rock, people usually think that they denote isolated hazards, which Tom Moore is not. Examples of spindle day beacons on isolated hazards in the Marblehead area are on the Brimbles and Satan's Rock. I think that the can is more appropriate. You should not go inside Tom Moore Rock.



The bottom line is that if you ignore aids to navigation, you should be prepared to pay the consequences.