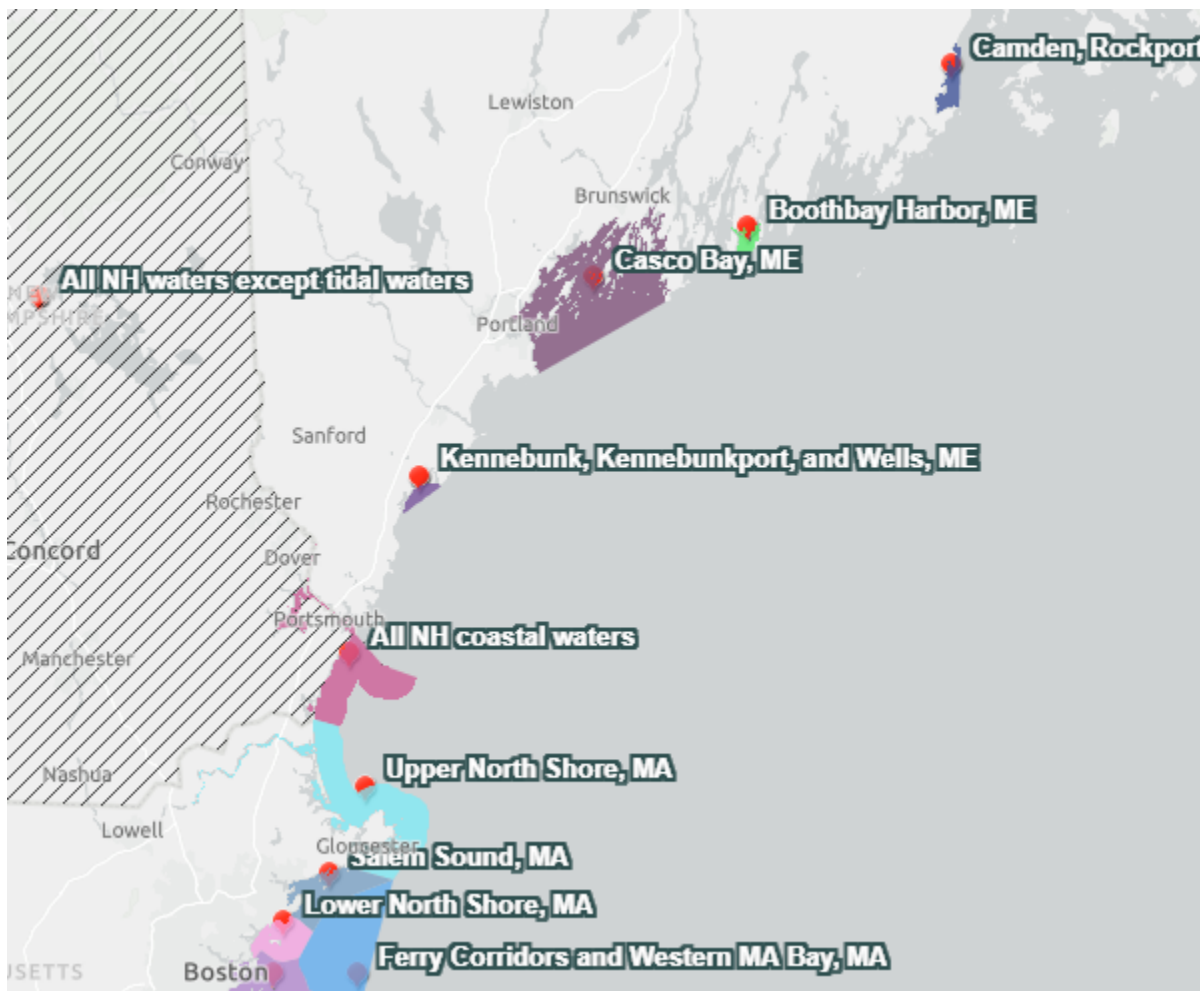


No Discharge Zones John Collins USCGAux SBOS ADSO-PE

If a vessel is equipped with a toilet or Marine Sanitation Device (MSD), it must be Coast Guard Approved. These must hold sewage for shore-based disposal or treat the sewage prior to discharge. The applicable Coast Guard regulation is found in 33 CFR 159 and the Environmental Protection Agency Regulation is found in 40 CFR 140.

A "No Discharge Zone" is a designated body of water that prohibits the discharge of treated and untreated boat sewage. Federal Law prohibits the discharge of untreated sewage from vessels within all navigable waters of the U. S., which include territorial seas within three miles of shore. MSDs must be secured when operation in a no discharge zone. States may designate additional no discharge zones. The map below shows the coastal zones for Northern New England. The entire map can be found here:

<https://epa.maps.arcgis.com/apps/webappviewer/index.html?id=0fb057d8a6584e6ea8c9a6d52f0b326>



All lakes are no discharge zones.

MSDs cannot be discharged in the No Discharge Areas. The Coast Guard requires that the MSDs be secured to prevent discharge in these areas. Greywater is not included in the discharge ban.

The following links will show you where pump-out stations are located.

Connecticut

<https://ctdeep.maps.arcgis.com/apps/webappviewer/index.html?id=87718c47b7d5482daf6169fb3d3d766e>

Maine

<https://maine.maps.arcgis.com/apps/webappviewer/index.html?id=d7c7e6027dce4109897f95289ac00f40>

Massachusetts

<https://www.google.com/maps/d/viewer?mid=1D7ev3T7FnLcE6Lk2IDzK5XiYfUY&ie=UTF8&hl=en&msa=0&ll=42.47242933596862%2C-69.95350233573271&spn=1.900213%2C3.713379&t=h&z=9>

New Hampshire

[NH Boat Pumpout Facilities \(arcgis.com\)](#)

New York and New Jersey

<https://www.nycgovparks.org/facility/boating-and-marinas/pumpouts>

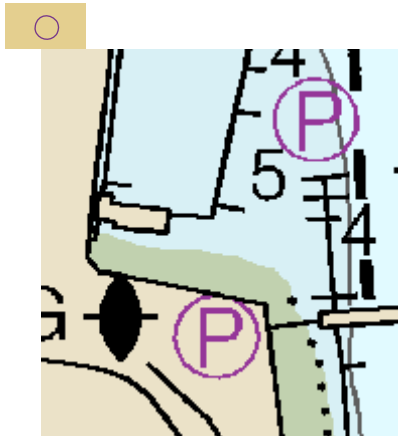
Rhode Island

<http://www.dem.ri.gov/maps/mapfile/pumpmap.pdf>

Vermont

<https://www.marinadockage.com/pumpout-nav-app-expands-lake-champlain/>

Many of the pump out stations are noted on small scale charts by a circle P symbol as seen on Chart 13269 in Scituate Harbor



Sewage wastes, if discharged directly into the water degrades the water quality by introducing disease causing microorganisms, nutrients, and chemicals into the marine environment. Do your part by properly disposing of sewage waste.