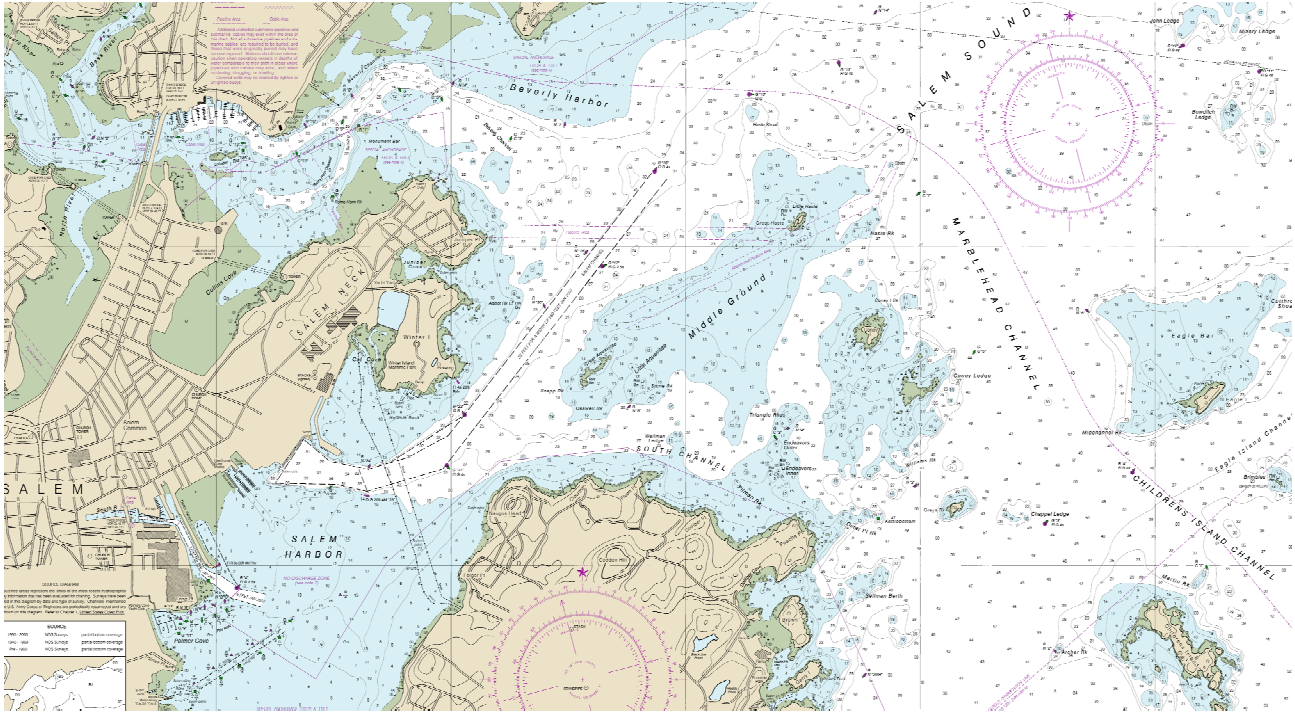


## Natural Gas Pipe Line

John Collins, USCGAux SBOS ADSO-PE

Have you ever wondered what the red, dashed line on Charts 13267 and 13276 represents? It comes in via the Childrens Island/Marblehead Channel and ends about where the overhead power lines end in the Kernwood section of Salem.

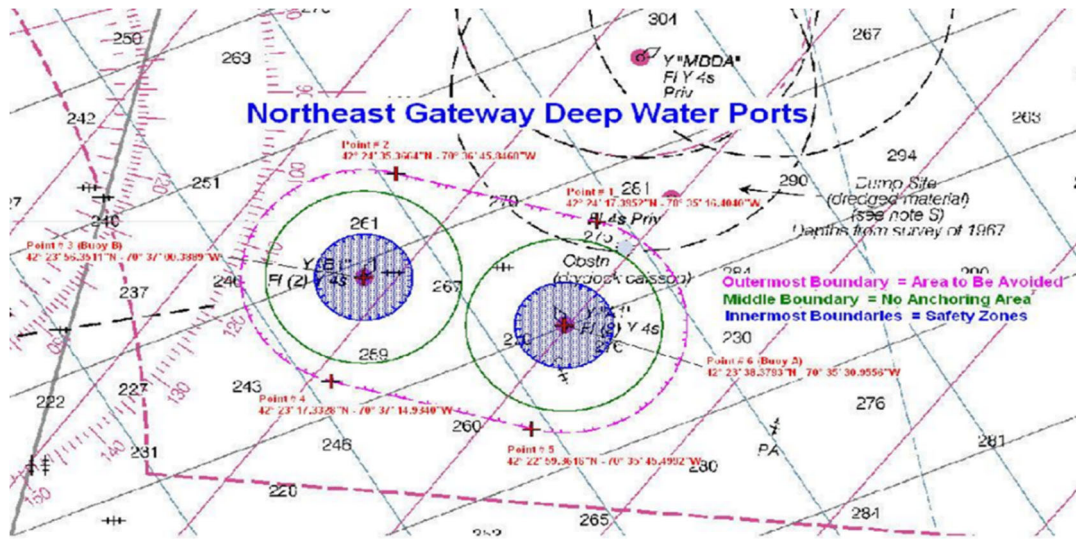


It is the Algonquin Hubline, an approximately 29.5 mile natural gas pipeline, constructed primarily in the ocean along the coast of Massachusetts between Salem and Weymouth. The route travels in a southerly direction through the communities of Salem, Beverly, Marblehead, Swampscott, Lynn, Nahant, Winthrop, Boston, Hull, Quincy, and Weymouth.

This is a high pressure, 1000 plus PSI, pipeline that is buried in the ocean floor. A lateral line from this pipeline feeds the power plant in Salem. Once, a lateral from this pipeline to Somerville was proposed. It was not constructed.

There are two offshore LNG terminals that feed into this pipeline, at a point about a nautical mile south of Halfway Rock, and is marked by a white/orange buoy.

The offshore terminals are about 15 nautical miles south southeast of Marblehead are marked by yellow buoys. The Northeast Gateway Deep Water Port is usually patrolled by the workboats Gateway Endeavor or Scarlett Isabella. This area should be avoided. Below is a piece from Chart 13567 that shows the active terminal. It only gets used during the winter. It is on the edge of the Stellwagen Bank marine sanctuary.



The other terminal, the Neptune Deep Water Port, is inactive.