
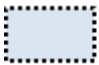
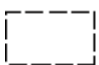



Fish Havens

John Collins, Div 4 SO-PE

Fish havens are artificial shelters made up of rocks, rubble, subway cars, ships, airplanes, specially designed concrete structures, and other objects placed on the sea floor to attract fish and enhance their habitat. They are often located near fishing ports or major coastal inlets. Consisting of rigid materials and projecting above the bottom, they can impede surface navigation and foul anchors. Only fish havens authorized by the U.S. Army Corps of Engineers are shown on NOAA charts. The Corps specifies an "authorized minimum depth" for each, which is the shallowest depth to which objects may project toward the surface

The three symbols used to represent fish havens on NOAA charts are shown in the table below. Symbol listed in U.S. Chart No. 1 Symbol Description K 46.1 A circle is used to depict fish havens that are too small to show their actual size on the nautical chart. K 46.2 Fish havens with an authorized minimum depth of 66 ft (20 meters) or less are charted with a dotted line and tinted blue. K 46.2 Fish havens with an authorized minimum depth of more than 66 ft (20 meters) are charted with a dashed line with no tint. Fishing prohibited or permitted?

Symbol listed in U.S. Chart No. 1	Symbol	Description
K 46.1	 <i>Obstn Fish Haven</i>	A circle is used to depict fish havens that are too small to show their actual size on the nautical chart.
K 46.2	 <i>Obstn Fish Haven (auth min 42 ft)</i>	Fish havens with an authorized minimum depth of 66 ft (20 meters) or less are charted with a dotted line and tinted blue.
K 46.2	 <i>Obstn Fish Haven (auth min 68 ft)</i>	Fish havens with an authorized minimum depth of more than 66 ft (20 meters) are charted with a dashed line with no tint.

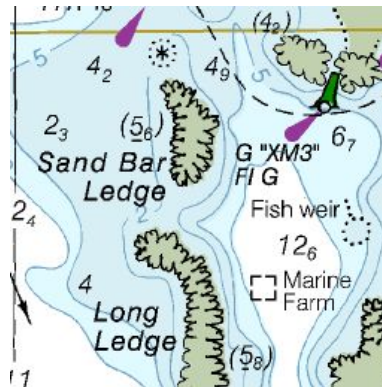
There is an international symbol to delineate areas where fishing is prohibited  However, NOAA does not show federal, state or local fishing restrictions on its nautical charts. The fish haven symbols, shown in the table above, do not indicate whether fishing is allowed or not. Many fish havens were created to support and encourage recreational fishing, while others have been created specifically to protect fish and fishing may be restricted in these areas. Anglers should check with appropriate authorities before dropping a line within a fish haven to learn what restrictions, if any, may apply.

An example of a fish haven shown with the K 46.2 symbol can be seen on Narragansett Bay charts 13221 and 13223 where there are several white/orange buoys west of Middletown. Examples of fish havens shown with the K 46.2 symbol can also be seen southwest of Preble Island on Frenchman's and Blue Hill Bay and east of Hardwood Island, Maine on chart 13312. Others are shown on Machias Bay Chart 13326 off Cross Island and Starboard Island. There are a number of others off the coast of

Maine. The fish haven off Hardwood Island is shown below. K 46.1 symbol areas are often also shoal spots. Note that it is marked by yellow buoys as shown on Chart 13312.



Others are noted as fish weirs as seen on Chart 13388. Note no markers at these sites. Many of these have structure visible above the water.



In the inlets in Maine, aquaculture locations are numerous and often not well marked. It is best to stay in channels. The following is a link where the green dots show locations in Maine.

<https://www.maine.gov/dmr/aquaculture/leases/aquaculturemap.html>

Be careful when cruising Downeast as there are local fish havens that are not shown on the charts.