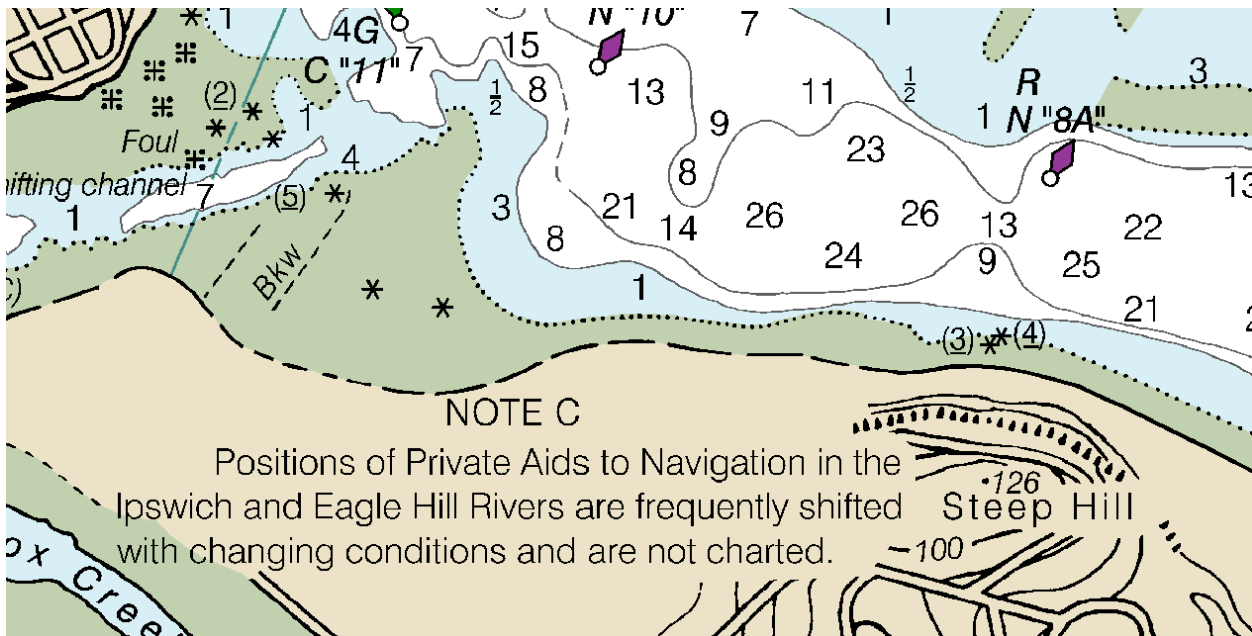
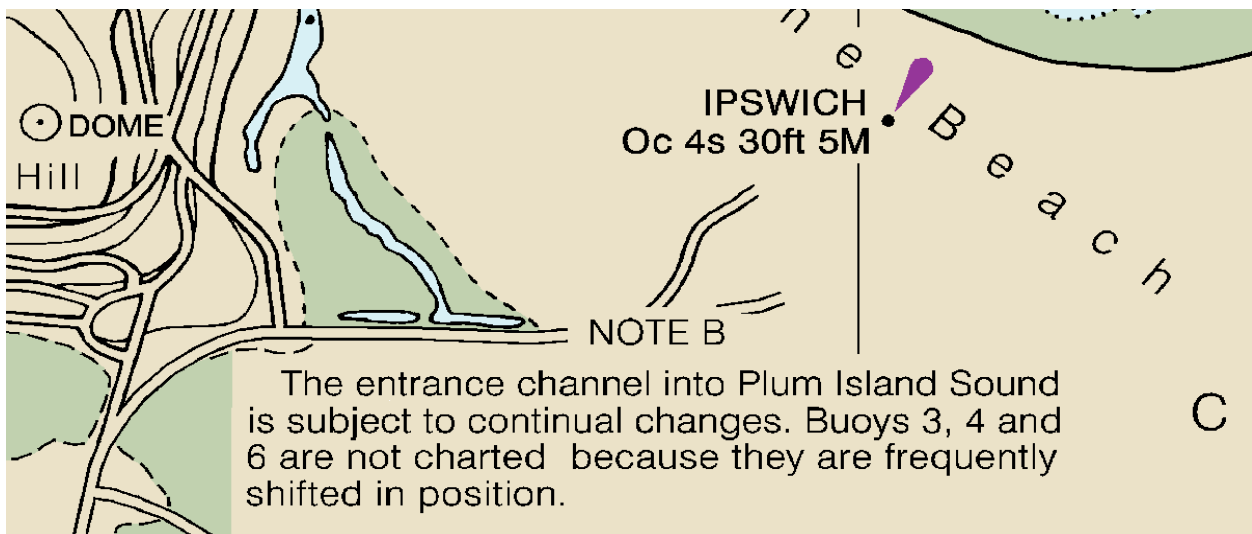


Buoys Not Shown

John Collins, F43 FSO-MS, Div 4 SO-PE

Not all aids to navigation are shown on the charts. In areas where shifting sand makes the channel move, a note will be on the chart. Examples of these are shown for the Essex Bay and River and Plum Island Sound on Charts 13279 and 13282, North Beach Cut (Chatham) on Chart 13248, and Ipswich and Eagle Hill Rivers on Chart 13282. These are not shown in the Light List.

The notations from Chart 13282 are shown below.



There are buoys shown on the charts where the locations can change. Check the Light List where it says: "Positions of buoys frequently shifted due to changing conditions". Examples can be found in Chart 13278 for Hampton (NH) Harbor where the chart has the note:

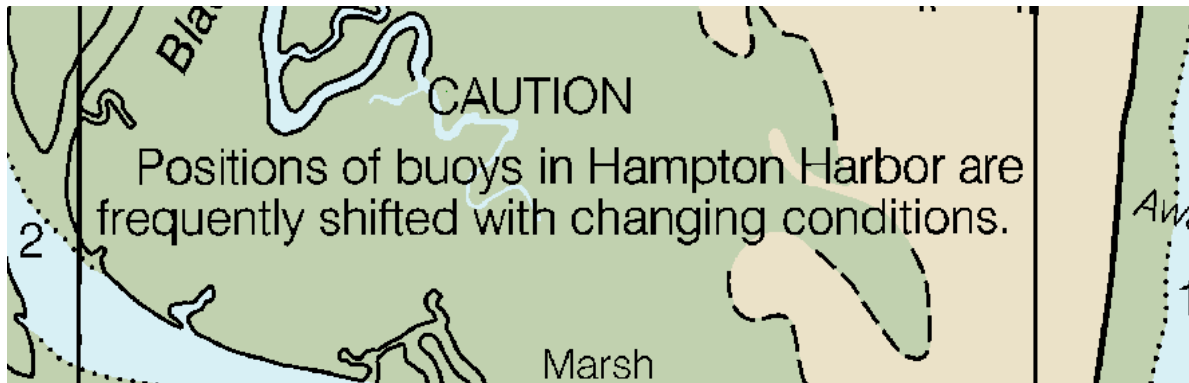


Chart 13267 for Scituate and for Fire Island Inlet on Chart 12352 have similar notes. There are many other examples of this in the Light List.

https://navcen.uscg.gov/sites/default/files/pdf/lightLists/LightList_V1_2023.pdf