

Bowditch Ledge Day Beacon

John Collins Div 4 SO-PE

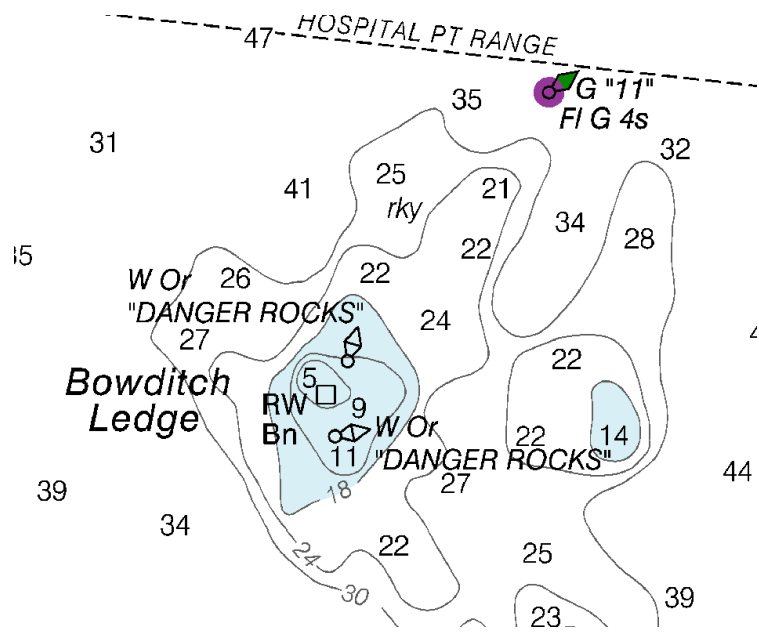
The Bowditch Ledge Day Beacon, built during the 1800s off Great Misery Island, had not been in the best shape. You can see the condition in the picture below.



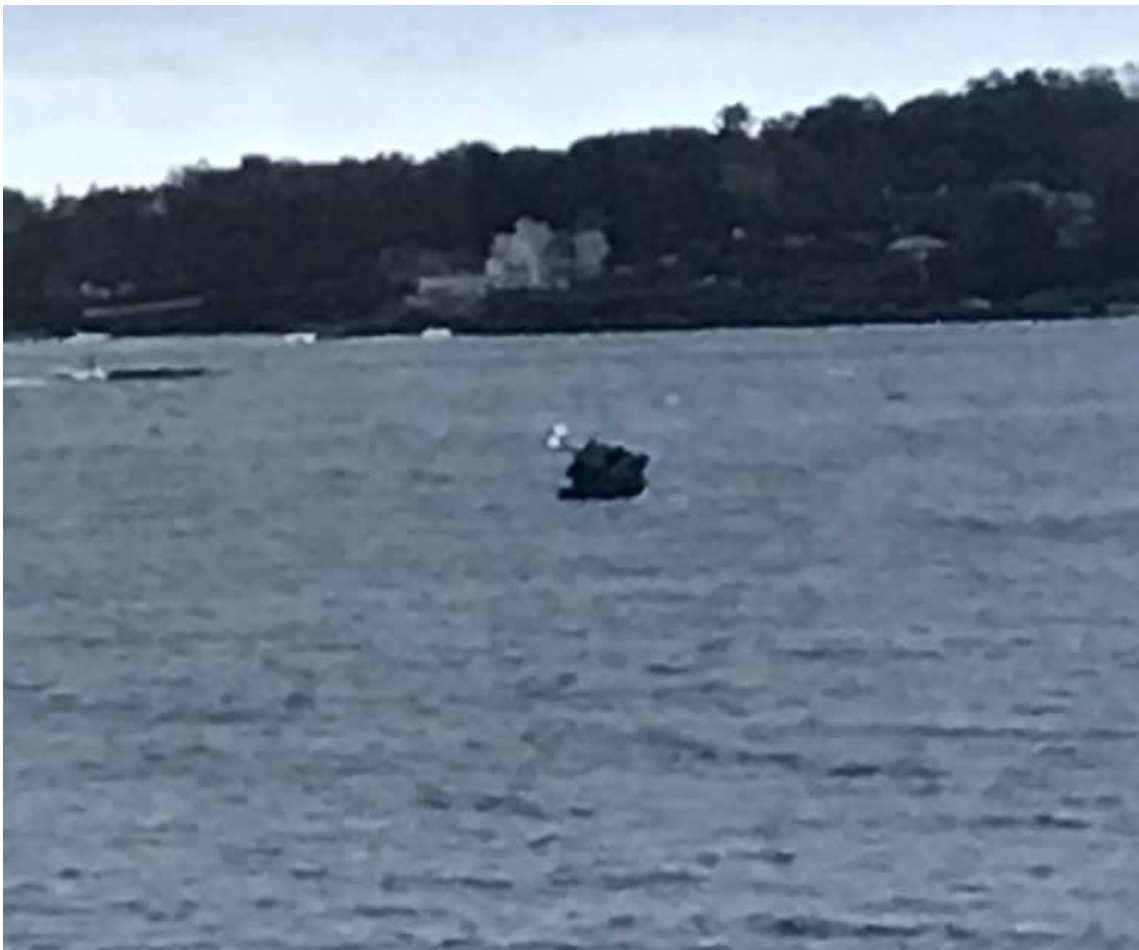
During a storm in November 2018 it collapsed. This is what it looks like now at low tide. At high tide it is not visible.



The Coast Guard has placed danger buoys to the northeast and southeast of the rocks. The southeast one is seen in the picture above. These are shown on Chart 13276 as seen below.



The Abbot Rock day beacon, off Salem Willows was destroyed in an October 2019 storm.



The day beacon off Lobster Rocks in Beverly Harbor



They are not planning on replacing the Lobster Rocks and Abbot Rock day beacons. There are other aids to navigation nearby. Something permanent may be placed on Bowditch Ledge.