



U.S. Coast Guard Auxiliary

District 11 Northern Region
Serving Northern California, Nevada, Utah



District Navigation Systems

Covering Aids to Navigation, Bridges, & Chart Updating Activities

Accuracy - Credibility - Professionalism - Service to the Coast Guard & NOAA-NOS

DSO-NS Northern Region Report No. 2016-01

Date: February 1, 2016
From: DSO-NS 11(NR)
To: DCAPT-RBS & All D11 Auxiliary Members for Immediate Action
Info: EXCOM, Board & Staff, SO-NS, FSO-NS & Aid Verifiers, D11 (dpw) & D11 (dpa-n)
Subject: DSO-NS Monthly Report & Bulletin

SO-NS please contact each FSO-NS to see that they receive a copy of this bulletin.

Additional copies can be downloaded at: <http://ns.d11nuscgaux.info/ns.html>

CONTENTS OF THIS REPORT

- | | |
|---|--------|
| 1. AUX 06 C-School "Aids to Navigation and Chart Updating" on 01-03 June 2016 | Page 1 |
| 2. Become an "Auxiliary Aids to Navigation (ATON) Verifier": | Page 2 |
| 3. 2015 District, Division & Flotilla Navigation Systems Programs: | Page 3 |
| 4. 2015 - New Charts to start in D11NR Region: | Page 4 |
| 5. HAVE YOU UPDATED YOUR OPERATIONAL NAVIGATION PUBLICATION? | Page 4 |
| 6. 2016 D11DR NAVIGATION SYSTEM REPORT (Covering ATON, PATON, Bridge, & Chart Updating Activities) as of 02/01/2016: | Page 6 |
| 7. The Best References and Study Information Web Sites | Page 7 |
| 8. Have You Check Chart Dates Lately? Dates of Chart Latest Editions Table - Dated 02/02/2015: | Page 9 |

1. AUX 06 C-School "Aids to Navigation and Chart Updating" on 01-03 June 2016



NAVAL STATION MAYPORT FLORIDA

<http://wow.uscgaux.info/content.php?unit=aux06>

If you want to attend you must get your "School Short Term Training Request Form CG-5223" into DIRAUX (Tina Perry) ASAP. The website above will give all the information you will need to attend the 2016 AUX 06 Course.

About the Course: This school is designed to provide training in all five Auxiliary Navigation Systems Programs - **ATON** - Federal Aids, **PATON** - Private Aids, **BAP** - the Bridge Administration Program, **CU** - Chart Updating Program including **CP** - Coast Pilot Program. The aim of the Navigation Systems – “C” School is to train a cadre of Auxiliary leaders who will promote the Navigation Systems programs in their District and develop new and lasting programs and relationships with the Coast Guard & NOAA-National Ocean Service in support of the goals and objectives of the Auxiliary Aid to Navigation, Bridges, & Chart Updating Program. There is only one class scheduled in 2016.

Who May Attend: Candidates must be recently assigned as a FSO-NS (Flotilla Staff Officer - Navigation Systems), SO-NS (Division Staff Officer - Navigation Systems), or a DSO or ADSO-NS (District Staff Officer - Navigation Systems). This training is not refresher training. Alternative training is available through your District Navigation Systems program managers. COMDT (CG-5421) must approve all waivers. Only one class convening is scheduled per year. Applicants **MUST** have an internet e-mail account capable of receiving and downloading attachments to order and to benefit most from this training. Therefore, the candidate’s e-mail address must be included in Block #22 of the Short-Term Resident Training Request prior to approval.

<http://wow.uscgaux.info/content.php?unit=aux06>

How to apply for this C-School: Complete a “School Short Term Training Request Form CG-5223” from the above web-site. Send your completed CG-5223 form to your District DIRAUX (Director of Auxiliary)-(Tina Perry) via your Flotilla Commander (your FC is required to sign the form). Keep a copy of the Form CG-5223. Expect to receive travel and information about orders.

Priority codes for Block 15 on the form are:

- Priority 1 – Staff Officer who holds VA qualification;
- Priority 2 – Staff Officer who does NOT hold VA qualification;
- Priority 3 - all others.

AUX- 06 C- School “Aids to Navigation & Chart Updating” ID code 501065, POC: David C. Cawton, DVC-PN, david.c.cawton@gmail.com.

Do ASAP because the AUX- 06 ATON AND CHART UPDATING Course fills up fast.


2. Become an “Auxiliary Aids to Navigation (ATON) Verifier”:



Any BQ or AX member who would like to become **Auxiliary Aids to Navigation (ATON) Verifier (AV-PQS)** you must qualify by completing the Aids to Navigation (ATON) Verifier Performance Qualification Standard (PQS) Sign-off

booklet, 4 hour TCT & annual TCT, ICS 100 &, ICS 700. You can get the qualification PQS sign-off Booklet at <http://ns.d11nuscgaux.info/avq.html> or the National Navigation Systems website <http://wow.uscgaux.info/content.php?unit=P-DEPT&category=aids-verifier-pqs>. The

Aids to Navigation (ATON) Verifier PQS Booklet is your study guide and check off of required tasks to be came an **Auxiliary Aids to Navigation (ATON) Verifier PQS**. Workshops are held at the PCA Training Fair at Coast Island, Alameda, CA. You can request a copy of the PCA **Auxiliary Aids to Navigation (ATON) Verifier PQS training CD**. For more information contact James Duncan the District 11 Northern Region DSO-NS.

All Qualified Aids to Navigation (ATON) Verifier as stated in [Chapter 11 in the Auxiliary Manual A.14.b. Operations Program] “states that this ribbon recognizes qualifications in the various operations program areas and a qualified Aid Verifier, may wear the Operations Program  Ribbon.

3. 2016 DISTRICT, DIVISION & FLOTILLA NAVIGATION SYSTEMS PROGRAMS:

For D11 Northern Region Auxiliary Members here is an overview of our Navigation Systems Programs. If you have any interest and would like to explore any of these Navigation Systems programs contact your FSO-NS, SO-NS & DSO-NS Officers for information. You can also checkout our District web site. <http://ns.d11nuscgaux.info/ns.html>

PROGRAMS WITHIN NAVIGATION SYSTEMS

The U.S. Coast Guard has the responsibility for the establishment and maintenance of all Aids to Navigation on the Waterways of the U.S. This is an all-inclusive responsibility, and it includes the coastal waters and inland waters of the U.S. This responsibility is affected in conjunction with NOAA, National Ocean Service and other Federal Government agencies, State and Local Government elements and Private entities. The U.S. Coast Guard Auxiliary, in its overall supplemental supporting role, provides specifically authorized assistance to the Coast Guard in its Aids to navigation missions and National Ocean Service in its Chart Updating missions. This Auxiliary support effort is provided through the Aids to Navigation and Chart Updating (ATON/CU) Programs.

District 11 Northern Region Navigation Systems Division which is a part of the Marine Safety (Prevention) Department focuses geographically on Northern California, Nevada and Utah waterways. Our mission is to insure the safety of both commercial and recreational boaters; supporting them in their navigation efforts through five major roles; **Federal Aids to Navigation (ATON)**, **Private Aids to Navigation (PATON)**, **Bridge Administration Program (BAP)**, **Chart Updating (CU)**, also within the **Chart Updating (CU)** you have **Navigational Charts updating (CU)**, and **Coast Pilot Updating (CP)**.

A. AIDS TO NAVIGATION PROGRAMS:

- 1. Only Qualified & Certified Aid Verifiers participate in the D11 (dpw) annual Private Aids Verification and annual Bridge survey programs**
- 2. Any USCG Auxiliary member can participate in any of the Aids to Navigation program by reporting any discrepancies to aids found in the CG Lighted Light and any Bridge found discrepant.**

Federal Aids to Navigation (ATON); As a member of the USCG Auxiliary we are tasked with looking for and reporting any and all discrepancies to Federal Aids to Navigation. Assisting District Eleven (dpw), Aids to Navigation Team (ANT) units and other Aids to Navigation request for assistance as needed. All members of the USCG Auxiliary should be on the watch for any aids to navigation discrepancies they see and report them.

Private Aids to Navigation (PATON); As a Qualified & Certified Aid Verifier we are tasked with verifying all Private Aids to Navigation assigned by District Eleven (dpw) on an annual basis, looking for discrepant private aids and report all private aids that have been put in our federal waterway without a permit. Report any private aids to navigation that become or are hazards to navigation. Want to do this become an Aids to Navigation (ATON) Verifier PQS?

Bridge Administration Program (BAP); As a Qualified & Certified Aid Verifier we are tasked with surveying all assigned Bridge Lighting, Vertical Clearance Gauges & Fender Systems by District Eleven (dpw) Bridge Section on an annual basis. We also assist D11 (dpw) Bridge Section with information about waterways where new bridges may be planned. All members of the USCG Auxiliary should be on the watch for any bridge lighting, vertical clearance gauges & fender discrepancies they see and report them. Want to do this become an Aids to Navigation (ATON) Verifier PQS?

B. CHART UPDATING PROGRAMS (CU):

Any USCG Auxiliary member can participate in any of the Chart Updating Programs. Chart updating program is divided into three parts, 1) **Navigational Chart updating (CU)**, and 2) **Coast Pilot Updating (CP)**. As a member of the USCG Auxiliary we are tasked with looking for and reporting any and all discrepancies, corrections, & additions to our **Navigational Charts & Coast Pilot**. This work helps make sure that our charts are accurate for the maritime public and keeps the environment safe from pollution. This work helps make sure that the Navigational Charts & Coast Pilot are accurate for the maritime public.

4. 2016 – NEW CHARTS for D11NR: We had only 1 new Chart Editions Chart 18640 in 2015. See “Dates of Chart Latest Edition Table” for all D11 Northern Region latest editions on page 9. These charts are always available by Charts-on-Demand and downloading **NOAA RNCs Raster Navigational Charts and NOAA ENC’s Electronic Navigation Charts** from the NOAA-NOS website at <http://www.nauticalcharts.noaa.gov/staff/chartspubs.html> . These are the most up to date charts.

Charts with edition dates prior to those listed in the table on page 9 are obsolete for use in operational navigation and chart updating activities. The date of a chart is of vital importance to patrol operations, aid verification, chart updating and general cruising activities. When charted information becomes obsolete, further use of the chart for navigation may be dangerous. Natural and artificial changes, many of them critical, are occurring constantly; and it is important that we in the Auxiliary use the most up-to-date charts.

LATEST EDITIONS IS FROM THE NOAA’S “ON LINE CHART VIEWER & CHART- ON - DEMAND”. The web address below is an excellent source for the most up to date charts to attach to your Chart Updating, ATON discrepancy reports, unpermitted PATON’s found & for your electronic charting software because these Charts have all been updated through <http://www.nauticalcharts.noaa.gov/mcd/NOAACHartViewer.html>

5. HAVE YOU UPDATED YOUR OPERATIONAL NAVIGATION PUBLICATION?

Are all your operational publications up to date? All the following publications are **FREE** to download to your computer. Print out what you need for your AOR or cruising area.

A. THE COAST GUARD 2016 LIGHT LIST.



It is now available online at the Coast Guard NAVCEN at <http://www.navcen.uscg.gov>. Every operational member should have this new 2016 Light List available at all times planning your operation and underway. Download to your computer so you can print out the needed pages for your AOR or cruising area.

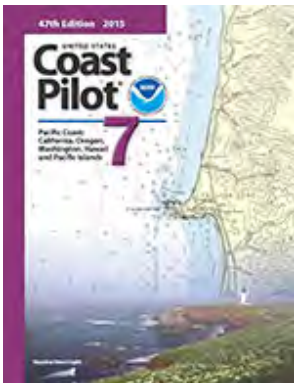
Also, you can get the **WEEKLY UPDATE** to the 2016 CG LIGHT LIST at <http://www.navcen.uscg.gov/?pageName=lightListCorrections>.

B. LOCAL NOTICE TO MARINERS ELEVENTH DISTRICT LNMS FOR 2016.



You can receive, if you would like, the Local Notice to Mariners by email each week. You will receive the email Wednesday or Thursday the notices telling you they have posted the latest LNMs for Eleventh District, please register with our one-way email service at <http://www.navcen.uscg.gov/?pageName=listServerForm>. You must have the free Adobe Acrobat Reader to view these documents.

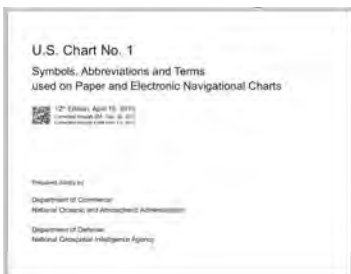
C. 2016 COAST PILOT, VOLUME 7, EDITION 48TH.



The United States Coast Pilot® is the nautical books that cover a variety of information important to navigators of coastal and inland waters of San Francisco Bays, Delta waters, and Sacramento & San Joaquin Rivers. This contains supplemental information that is difficult to portray on a nautical chart. Coast Pilot 7 - 48th Edition, 2016 covers the coasts of California, Oregon and Washington, and includes Hawaii and other United States territories in the South Pacific. This publication has been updated through: 24-JAN-2016. You can download from the NOAA-NOS website <http://www.nauticalcharts.noaa.gov/nsd/cpdownload.htm> and the U.S. Coast Pilot now offers completely updated publications every week.

To increase efficiency and timeliness, Coast Pilot updates will only be posted on this website, and no longer be included in the Coast Guard Local Notice to Mariners.

D. U.S. CHART NO. 1: <http://www.nauticalcharts.noaa.gov/mcd/chartno1.htm>



U.S. Chart No. 1: Symbols, Abbreviations and Terms used on Paper and Electronic Navigational Charts provides descriptions and depictions of three nautical chart symbology sets. "INT1" symbols specified by the International Hydrographic Organization (IHO). U.S. symbols used on nautical charts published by the National Oceanic and Atmospheric Administration (NOAA) and the National Geospatial-Intelligence Agency (NGA), when they differ from INT1 symbols.

ECDIS symbols used to display Electronic Navigational Chart (ENC) data on Electronic Chart Display and Information Systems (ECDIS) as specified by the IHO.

Edition 12, dated April 2013, supersedes all previous editions of U.S. Chart No. 1.

6. 2016 NAVIGATION SYSTEMS REPORT

This report activity table covers all ATON, PATON, Bridge, & Chart Updating activities & reports received by D11 (dpw), NOAA-NOS & AUXINFO through **February 1, 2016**.

2016 DIVISIONAL, BRIDGE, ATON, & CHART UPDATING ACTIVITY SUMMARY REPORT

Div.	AIDS TO NAVIGATION ACTIVITY							Bridges Assigned				PATON's Assigned				2015	
	Bridge	Bridge AUX Data	ATON	ATON AUX DATA	PATON	PATON NO Permit	PATON AUX DATA	AOR	Check	% Done	Still to Do	AOR	Check	% Done	Still to Do	A V 's	P Q S
1			1					4		0%	4	104		0%	104	4	3
3	1							15		0%	15	41		0%	41	2	2
4								2		0%	2	68		0%	68	1	2
5								9		0%	9	103		0%	103	2	3
6								2		0%	2	67		0%	67	1	1
8								1		0%	1	5		20%	5	1	0
10								8		0%	9	58		0%	58	1	1
11								0		NA	NA	137		0%	139	2	2
12								8		0%	8	150		0%	148	2	2
Total	1	0	1	0		0	0	50	0	0%	50	733	0	0%	733	16	17
	2016 D11 NR Chart Updating Year Jan 1, 2016 to Dec 31, 2016						2016 NOAA-NOS Chart Updating Year April 1, 2015 to Mar 31, 2016					2015-2016 NOAA-NOS Chart Updating Year Apr 1, 2015 to Mar 31, 2016					
Div	Reports	2nd Ob	CUC	Reports	2nd Ob	CUC	Reports	2nd Ob	CUC								
1																	
3				7		1251	7		1251								
4																	
5																	
6																	
8																	
10																	
11																	
12																	
Total	0	0	0	7	0	1251	7	0	1251								
Total D11 CU Reports 4/1/15 through 3/31/16 →				7	Total D11-NOAA CUC 4/1/15 through 3/31/16 →				1251								
Total Aids to Navigation Reports				2	Total Members Submitting Reports in 2016 →				3								
Total Aids to Navigation in AUXDATA*				0	0 out of 2 reports showing up in AUXDATA →				0%								
Total Chart Updating Reports				7	A= ATON, P= PATON, B= Bridges, U= Unauthorized												
Total ATON & Chart Updating				9	NOAA-CUC=Charting Credit Points award by NOS to date.												
➤ Note: *Red numbers above is the information from AUXINFO as of February 1, 2016 update.																	
➤ NOAA-NOS Chart Updating Year is from - April 1 through March 31 each year.																	
➤ D11NR Chart Updating Year is from - January 1 through December 31 each year.																	
➤ Note: The Green number under "2 nd Ob" indicates secondary Chart Updating Observers.																	
✓ Note: "ALWAYS submit a 7030 for all ATON, PATON, Bridge, & Chart Updating Activity. Your work is not completed until your 7030 is in your FSO-IS hands."																	
✓ "Always check AUXINFO for your ATON, Bridge, & Chart Updating activity. If you don't find your activity recorded and you have submitted the proper ANSC 7030, check with your FSO-IS or SO-IS for help."																	

7. THE BEST REFERENCES AND STUDY INFORMATION WEB SITES

Here are your best References and Study information areas to pass the “Auxiliary Aids to Navigation (ATON) Verifier” PQS Booklet and Chart Updating programs. The “Auxiliary Aids to Navigation (ATON) Verifier” covers a wide range of areas.

NATIONAL US COAST GUARD AUXILIARY Study sites

NATIONAL PREVENTION DEPARTMENT - <http://pdept.cgaux.org>

NAVIGATION SYSTEMS - <http://pdept.cgaux.org/nsMain.html>

COMDTINST 16500.16A - Coast Guard Auxiliary Aids to Navigation Program & (Google)

COMDTINST 16500.7 - Aids to Navigation Manual-Administration - & Chapter 5 (Google)

COMDTINST M16590.5 - Bridge Administration Manual, (Google)
Bridge Lighting

ATON & Chart Updating Forms, Manuals & other Documents of Interest

COAST GUARD AUXILIARY

District 11 - NAVIGATION SYSTEMS - <http://ns.d11nuscgaux.info/ns.html>

WHAT WE DO

D11 BRIDGE, ATON, CHART UPDATING TRAINING GUIDES

PUBLICATIONS & D11 STANDARD OPERATING PROCEDURE (SOP)

FORMS- ATON & Chart Updating Forms, Manuals & other Documents of Interest

PAST DSO-NS BULLETINS

QUALIFICATIONS

ADDITIONAL RESOURCES

LATEST CHARTS LIST

District 1 - NAVIGATION SYSTEMS - <http://www.uscgaan.com/>

US COAST GUARD websites

<http://www.navcen.uscg.gov/>

- USCG Light List-Volume 6 California Coast (Weekly update)

- Local Notice to Mariners (LMN) (LNM Weekly on Wednesday)

USCG DISTRICT 11th PREVENTION DEPARTMENT - <http://www.uscg.mil/d11/dp/dp.asp>

D11 (dpw) - <http://www.uscg.mil/d11/dp/dpw.asp>

-Local Notice to Mariners (LMN)

D11 (dpw) Private Aids - <http://www.uscg.mil/d11/dp/PatonOne.asp>

D11 (dpw) Bridges - <http://www.uscg.mil/d11/dp/bridges.asp>

- Form CG-2554 Private Aids to Navigation Application

33 CFR 66-Private Aids - (Google) this is the easiest way to find the information

33CFR 117, 114-118-Bridges – (Google)

COMDTINST 16500.16A - Coast Guard Auxiliary Aids to Navigation Program (Google)

COMDTINST 16500.7 - Aids to Navigation Manual-Administration, - (Google)

Chapter 5

COMDTINST M16590.5 - Bridge Administration Manual, (Google)

Bridge Lighting

NOAA-NOS websites

<http://www.nauticalcharts.noaa.gov/>

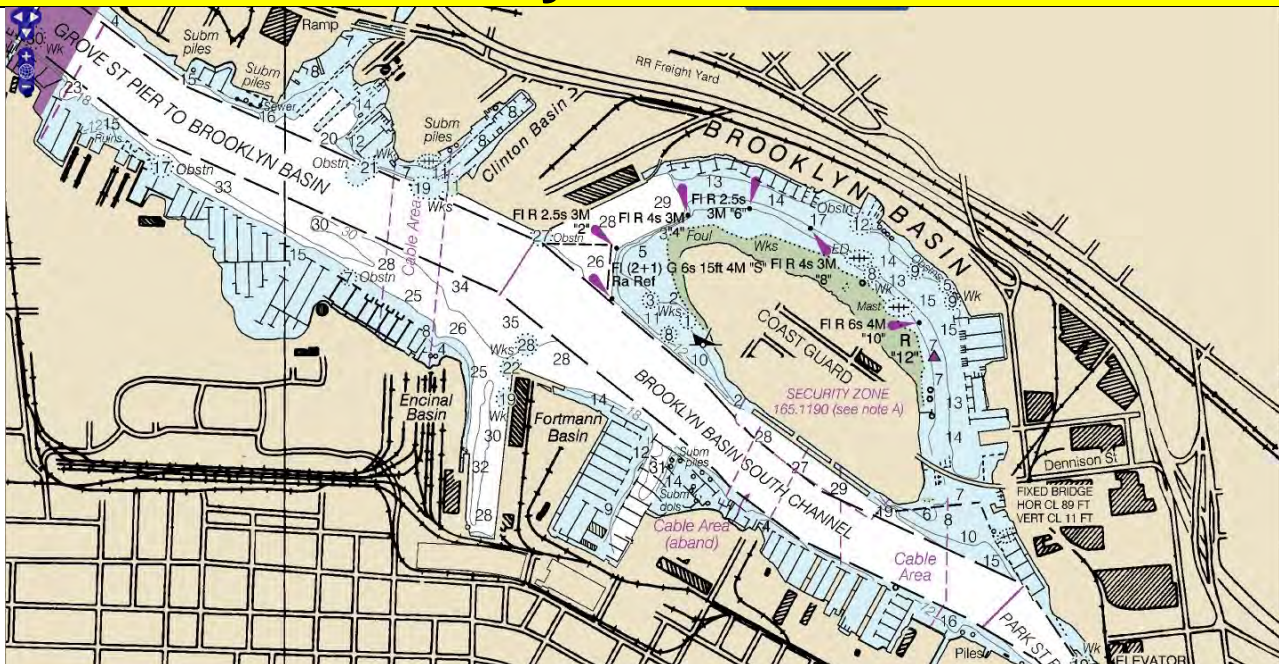
<http://www.nauticalcharts.noaa.gov/staff/chartspubs.html>

Coast Pilot

RNC Charts & LNC Charts

Chart No. 1

“All auxiliary vessels when underway should be checking all Aids to Navigations for any type of Discrepancy and also should be checking the Charts, Coast Pilot & Shoreline for any type of Charting Errors as well as providing update reports on Charts, Small Crafts Facilities & Coast Pilot in your AOR”



DATES OF CHART LATEST EDITION TABLE

In D11 Northern Region **February 1, 2016**

Chart No.	Chart Scale	Edition No.	Traditional Paper Chart Edition Date	Latest Edition Date from LNM Update for NOAA On-Line-Viewer & RNC & ENC Navigational Charts updates	
				LNM 03/16	01/19/2016
18600	196,948	15	Mar 2011	LNM 03/16	01/19/2016
18020	1,444,000	39	Jan 2012	LNM 03/16	01/19/2016
18010	811,980	22	Sep, 2012	LNM 03/16	01/19/2016
18022	868,003	36	Jun 2012	LNM 03/16	01/19/2016
18601	40,000	14	Feb 2007	LNM 03/16	01/19/2016
18602	40,000	13	Feb 2012	LNM 03/16	01/19/2016
18603	40,000	17	Mar 2012	LNM 03/16	01/19/2016
18605	15,000	13	Dec 2010	LNM 03/16	01/19/2016
18620	200,000	24	Feb 2012	LNM 03/16	01/19/2016
18622	25,000	55	Jun 2010	LNM 03/16	01/19/2016
18623	40,000	12	Jan 2012	LNM 03/16	01/19/2016
18626	40,000	16	Dec 2012	LNM 03/16	01/19/2016
18628	10,000	9	Oct 2012	LNM 03/16	01/19/2016
18640	207,840	27	Oct 2015	LNM 03/16	01/19/2016
18643	30,000	18	Dec 2009	LNM 03/16	01/19/2016
18645	100,000	28	May 2013	LNM 03/16	01/19/2016
18647	40,000	16	Mar 2009	LNM 03/16	01/19/2016
18649	40,000	68	Jun 2013	LNM 03/16	01/19/2016
18650	20,000	57	Dec 2013	LNM 03/16	01/19/2016
18651	40,000	45	Dec 2013	LNM 03/16	01/19/2016
18652 SC	40,000:80,000	36	Feb 2012	LNM 03/16	01/19/2016
18653	20,000	12	Oct 2012	LNM 03/16	01/19/2016
18654	40,000	45	Jan 2012	LNM 03/16	01/19/2016
18655	10,000	59	Oct 2006	LNM 03/16	01/19/2016
18656	40,000	56	Aug 2010	LNM 03/16	01/19/2016
18657	10,000	19	Nov 2005	LNM 03/16	01/19/2016
18658	10,000	31	Sep 2007	LNM 03/16	01/19/2016
18659	10,000	16	Jan 2012	LNM 03/16	01/19/2016
18660	20,000	3	Sep 2005	LNM 03/16	01/19/2016
18661 SC	40,000	30	Mar 2009	LNM 03/16	01/19/2016
18662 SC	40,000	22	May 2009	LNM 03/16	01/19/2016
18663	20,000	6	Apr 2006	LNM 03/16	01/19/2016
18664	20,000	12	Aug 26, 2000	LNM 03/16	01/19/2016
18665	40,000	11	Aug 2004	LNM 03/16	01/19/2016
18666	10,000	1	Nov 24, 2001	LNM 03/16	01/19/2016
18667	20,000	12	Aug 26, 2000	LNM 03/16	01/19/2016
18680	210,668	32	May 2013	LNM 03/16	01/19/2016
18682	20,000	14	Nov 2003	LNM 03/16	01/19/2016
18685	50,000	34	Sep 2012	LNM 03/16	01/19/2016
18686	40,000	13	Jul 17, 1999	LNM 03/16	01/19/2016
18700	216,116	22	Jul 2003	LNM 03/16	01/19/2016
Coast Pilot	Volume 7	48	Updated weekly	Last Corrected through 01/24/2016	
CG Light List Weekly Updates	Volume 6	2016	Updated weekly	Last Corrected though LNM 04/16 – Dated 01/27/2016	