



The Platinum Edition

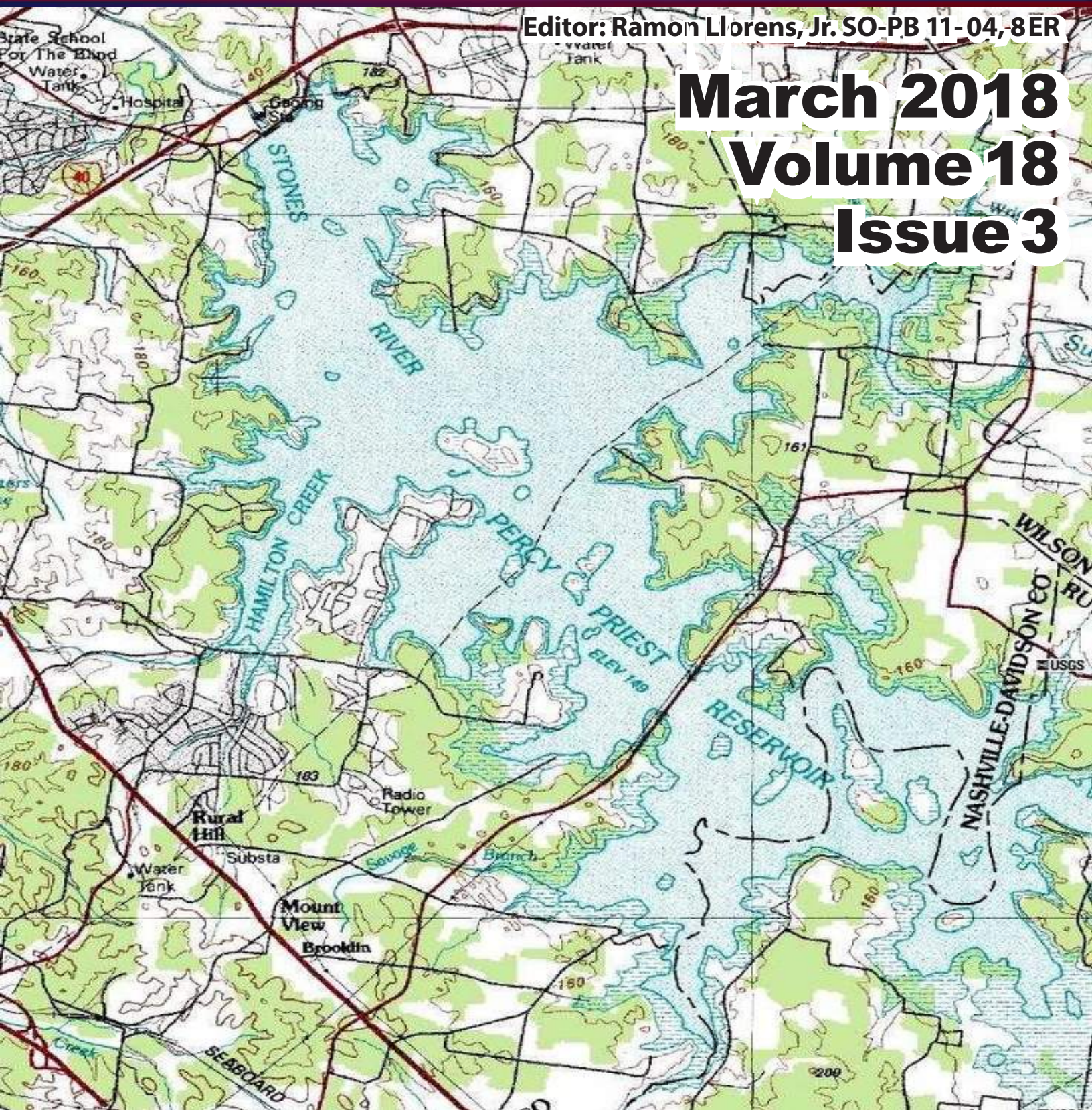


CGAUX Flotilla 11-4 District 8ER
Percy Priest, Nashville and Middle Tennessee

Flotilla Commander: Buell Noteboom Flotilla Vice Commander: Ramon Llorens, Jr.

Editor: Ramon Llorens, Jr. SO-PB 11-04, 8ER

March 2018
Volume 18
Issue 3



MONTHLY CALENDAR OF EVENTS

NEXT FLOTILLA BUSINESS MEETING MON. 16 APRIL, 1900

Paul B. Huff Army Reserve Center
3598 Bell Road Nashville, TN 37214
Contact: Buell Noteboom (206) 909-4127

SPRING 2018 D-TRAIN 8TH DISTRICT EASTERN REGION APRIL 26TH THRU 28TH

Pullman Plaza Hotel
1001 3rd Avenue
Huntington, WV 25701

(304) 525-1001

When Making reservations, please state:
You are with the USCG Auxiliary.



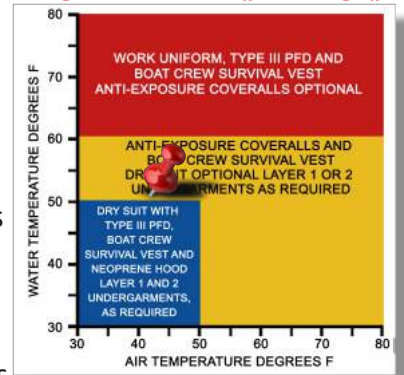
*Commodore's
Banquet*

NEXT DIVISION BOARD AND STAFF MEETING THURSDAY. 22 MARCH, 1900

Nashville Police Dept. East Precinct
936 E. Trinity Ln, Nashville, TN 37211
Contact: Fred Gilman (757) 894-0151

COLD WATER DANGERS!

By Ramon Llorens, Jr.
Spring Break is quickly approaching Middle Tennessee and some fishermen are already heading out on the rivers and lakes. Our summer like spring weather can be deceiving however.



It was close to 70 degrees a few days ago yet it snowed last night. Another factor not always apparent is how cold the water coming down from the Plateau might be. Currently the water temperatures are in the low 50s with air temperatures ranging from 60 down to 30. Looking at our chart, that puts the pin right on the edge of dry suits for optimal survival. So if anyone asks, before heading out on the water, suggest they check the local web sites for current water temperatures and remember the following:

1. Take precautions not chances. The risk of death from accidental immersion during cold weather seasons is higher than in warm seasons. The water is colder and survival time is greatly diminished.
2. Dress for the water temperatures. Cold water lowers body heat dramatically faster than cold air. Even if you are not planning on entering the water, the possibility of that happening is very real. An unexpected fall overboard is one of the leading factors in boating deaths.
3. Every second counts in cold water and preparation may mean the difference between life and death.
4. Always be sure to tell someone where you're going, when you expect to return and check in periodically or advise them of any changes in your float plan.

APRIL FOOLS DAY?

If you don't want the joke to be on you, keep in mind, March 31st is the last day you can wear Winter Dress Blue. This issue we will look at the Tropical Blue (Trops) Uniform.

Coast Guard Auxiliary Uniform Tropical Blue also known as (Trops)

Note: We wear essentially the same uniform as our active duty counterparts. This is not an Auxiliary uniform, but a Coast Guard Uniform with specific Auxiliary Distinctive Elements. Wear it correctly and wear it with pride. Most garments are purchased through the Coast Guard Uniform Distribution Center (UCD). Auxiliary specific items and uniform devices should be purchased through SHOPAUX at <http://auxiliarycenter.mybigcommerce.com>

LIGHT BLUE SHIRT SHORT SLEEVE

Worn open collar, this shirt has a six or seven button front closure, a soft stand-up collar and shoulder epaulets. Military creases are optional. Also available, tailored for females with right over left button front or an overblouse which is untucked. Purchased through the UDC

WHITE V-NECK T-SHIRT

Although you cannot see it, it is a standard part of the uniform. White V-neck T-Shirts may be Purchase Anywhere

LONG TROUSERS DARK BLUE WASH & WEAR

purchased through the UDC
(Not to be confused with the dark blue wool blend "Bravo" trousers. The wash & wear trousers are much easier to care for and standard wear with the Tropical "Trops" Blue or the Winter Dress Blue Uniform).

BLACK WEB BELT

UDC or SHOPAUX Uniform (All Items) / Accessories

SILVER BUCKLE or AUXILIARY LOGO BUCKLE

SHOPAUX Uniform (All Items) / Accessories

BLACK SOCKS

Purchase Anywhere

BLACK THICK SOLED OXFORD SHOES

UDC or Purchase Anywhere
police and fire uniform shoes are sold, or your nearest base exchange.



HEADGEAR

Combination Cap SHOPAUX Uniform (All Items) / Hats & Caps
Garrison Cap UDC or SHOPAUX Uniform (All Items) / Hats & Caps

BADGES FOR GARRISON CAP

On the left side (your left) you will affix the Garrison Cap Device Small. SHOPAUX Uniform(All Items) / Hats & Caps page 2.



On the right side you will affix a member collar device or your office insignia elected or appointed which matches your shoulder boards. These come in sets of two, so one can go on your garrison cap while the other goes on your ball cap.

SHOPAUX Uniform (All Items) / Insignia

ENHANCED SHOULDER BOARDS

We do not wear metal collar devices with the tropical blue (Trops) uniform. All Members as well as Appointed or Elected officers wear the appropriate shoulder board for their position. SHOPAUX Uniform (All Items) / Insignia

NAME TAG

SHOPAUX Uniform (All Items) / Accessories
Centered with bottom edge 1/4" over right pocket.
(I would suggest buying no less than 2 so when you purchase your Bravo's you will already have a second one for the jacket).