

Ocean Conservancy International Coastal Cleanup Day 19SEP15

Trash travels. And whether you are inland or on the water, the ocean is always downstream. The ocean provides the food we eat, the water we drink and the air we breathe. Ocean trash is a global problem but has a local solution. Be part of the solution!

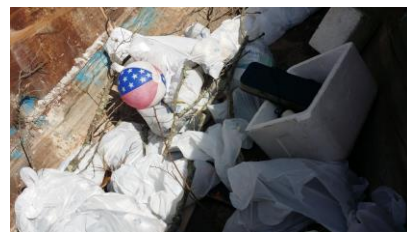
Local participation was held at Horton Park, Cape Coral with USCG Auxiliariist Rob Raybuck, FSO-PV as site coordinator. Participants included: six USCG Auxiliary Flotilla 9-10 members (Angel Peralta, Jeff Dedecker, W. Patrick McCarn, Andrew Wagner, Al Pickel, LuAnn Baker & Tim Stottle). Also, approximately 45 volunteers including several Girl Scouts (Troops 102, 463, 735, 768) and Cape Coral High School Key Club. Canal residents also removed debris from their canals.



Ocean trash is a serious pollution problem that affects the health of people, wildlife and local economies. Each year you can join the world's largest volunteer effort for our ocean and waterways by participating in the International Coastal Cleanup. For the past 29 years, Ocean Conservancy has inspired millions of volunteers, as well as industry players, the world over to take action by removing and recording trash during our International Coastal Cleanup.

For more than twenty five years, volunteers have improved the Lee County shorelines during the Ocean Conservancy's International Coastal Cleanup. Keep Lee County Beautiful recruits volunteers, site captains, area managers and local sponsors to foster unity and strengthen community bonds through beautification and improvement efforts across Lee County. This local community improvement program brings the power of volunteers and sponsors together to inspire change and build sustainable, vibrant communities.

30-40 bags of garbage/debris were collected from Four Mile Cove, Horton Park, Jaycee Park, Midpoint & Cape Coral Bridges.



For further information contact:
W. Patrick McCarn, ADSO Pollution Investigator
(239) 242-0883
pat.mccarn@uscgauxcapecoral.org