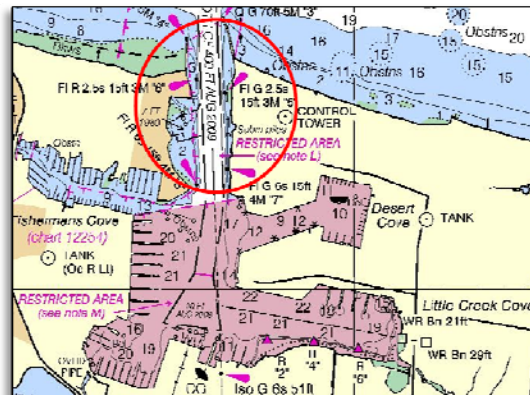




Comply with the Naval Vessel Protection Zone – Little Creek Channel



*No vessel or person is allowed within 100 yards of a U.S. naval vessel greater than 100 feet in length. Due to Little Creek Channel's width of 150 yards, **all vessels must exit Little Creek Channel when a U.S. naval vessel is approaching.***

All vessels must operate at minimum speed necessary to maintain a safe course within 500 yards of the U.S. naval vessel and proceed as directed by the Commanding Officer or the official patrol. Violations of the Naval Vessel Protection Zone are a felony offense, punishable by up to 6 years in prison and/or up to \$250,000 in fines.

To facilitate awareness of U.S. naval vessel movements, the U.S. Navy will communicate on VHF radio channel 16 when approaching Little Creek channel from sea and prior to sailings from the Little Creek installation.

Vessels at anchor or drift fishing must also observe the NVPZ rules

If you have questions about the NVPZ, contact Coast Guard Sector Hampton Roads Waterways Management Division at (757) 668-5580.